



# AT22-2

## PICK AND CARRY CRANE



MAXIMUM CAPACITY  
**22t**



MAXIMUM BOOM LENGTH  
**17.9m**



MAXIMUM HOOK HEIGHT  
**17m**

# OVERVIEW

The AT22-2 is a mid-sized, mobile pick and carry crane with a maximum lifting capacity of 22 tonne (24 USt). Boasting maximum safety features and superior capabilities than that of other pick and carry cranes in the field, the AT22-2 is a logical choice for customers who cover a wide range of applications.

## KEY FEATURES AND BENEFITS:

- ▶ 22 tonne at 1.4m radius
- ▶ 1.7 tonne at 15.8m radius
- ▶ 17m maximum hook height
- ▶ 16.8 tonne capacity on 4 part hook block
- ▶ Single line pull 4.2 tonne
- ▶ Dynamic LMI (patent protected)\*
- ▶ Safety Radar (patent pending)
- ▶ Wide stance boom lift cylinders enhance operator's vision.
- ▶ Easy access to all key maintenance points
- ▶ Modern cabin design ensures maximum comfort for the operator



# TECHNICAL DESCRIPTION

## 01. Boom

Maximum boom length	17.9m
Maximum hook height	17m
Boom elevation angle range	-6° / 60°
Maximum hook height with jib	20m
Articulation	40° R / 40° L
Machinery hook (rhino)	10 tonne

## 02. Winch

Maximum line pull	4.2 tonne
Two speed winch	38m/min 76m/min
Hook block (4 part)	16.8 tonne maximum rated capacity

## 03. Engine & Transmission

Standard engine	Mercedes OM936
Engine power	210kW
Engine torque	1200Nm
Fuel Type	Diesel
Fuel tank capacity	440 litres
Transmission	Allison 6 speed
Transfer case	ZF 2:1 Ratio
DEF tank capacity	38 litres
Emissions compliance	Tier 4f/Stage 5

## 04. Hydraulic System

Axial piston pump	62cc/rev
Maximum pump flow rate	130 litres/min
Maximum working pressure	250 bar
Hydraulic tank capacity	200 litres

## 05. Chassis

Front Axle	8,000 kg
Rear Axle	12,000kg
Axle total	20,000 kg
Turning radius	7.8m
Tyre Size	12.00 x 20

## 06. Brakes & Suspension

Brake System	Air operated drum brakes with ABS
Suspension	Two semi elliptic springs on front and rear axle plus torsion bar on front axle for stability

## 07. Vehicle Performance

Maximum rated travel speed	80 km/h
----------------------------	---------

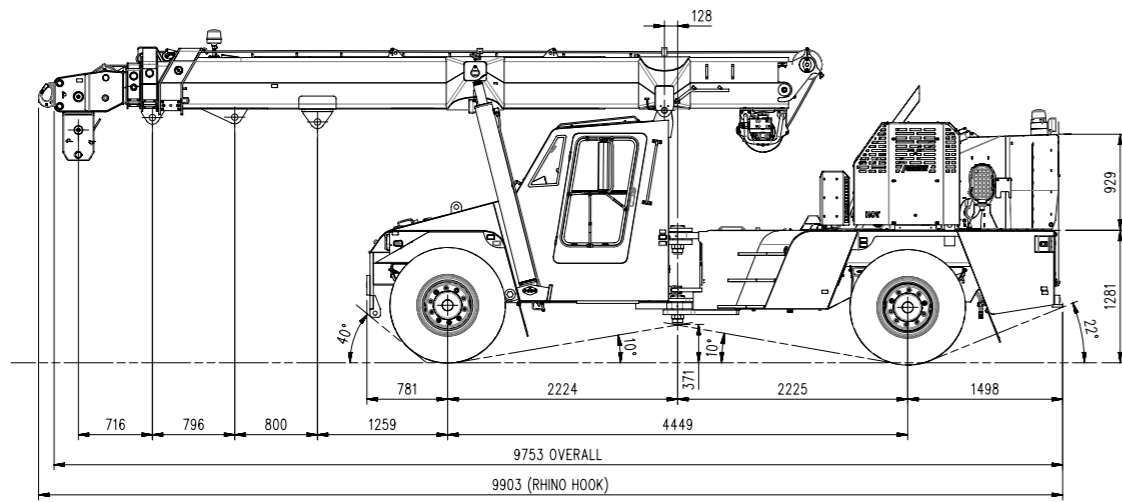


\*Refer to [www.terex.com/en/company/intellectual-property/franna-patents](http://www.terex.com/en/company/intellectual-property/franna-patents) for current patent details

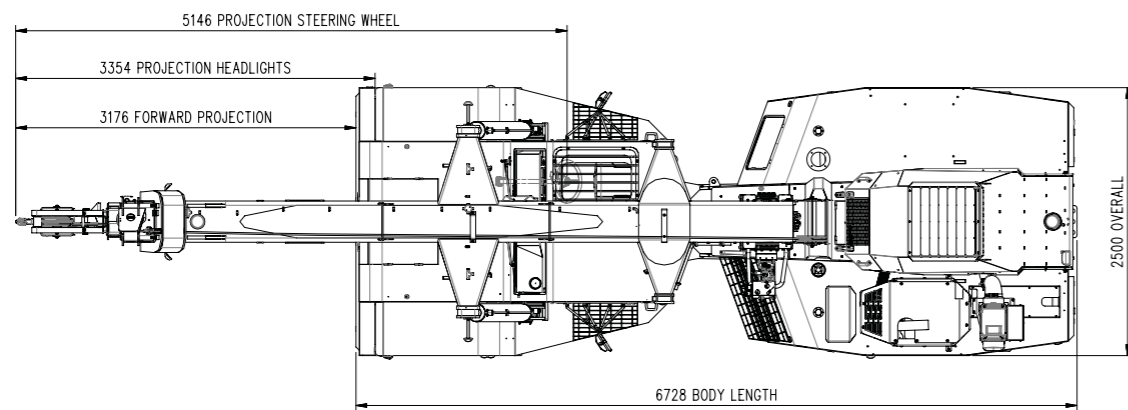
# DIMENSIONS / AREA OF OPERATION

# RADIUS LOAD CHART

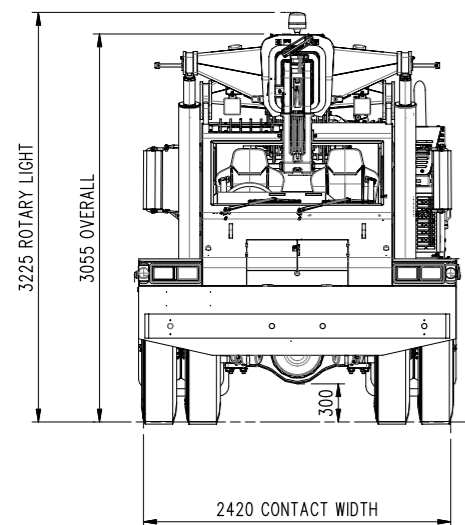
Side view



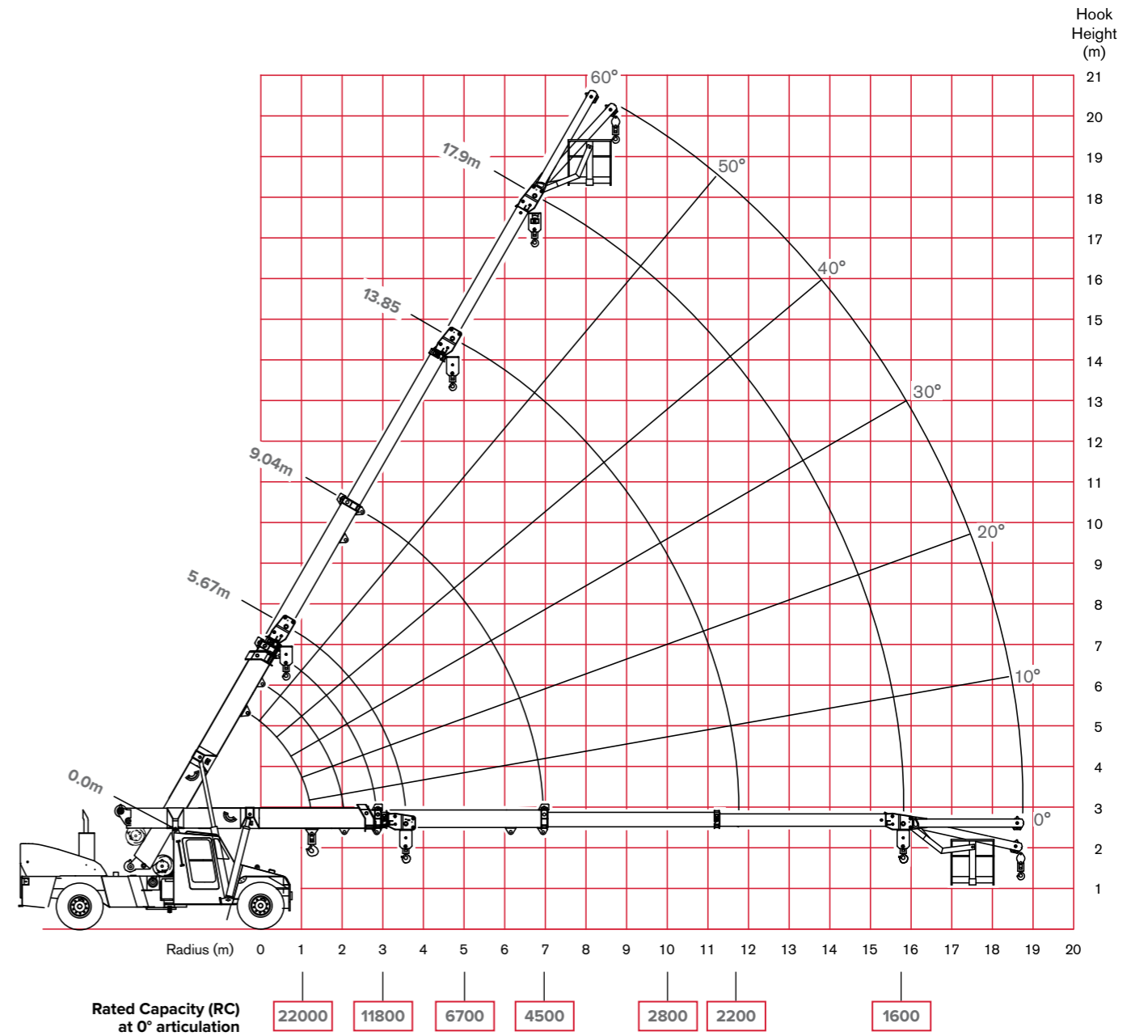
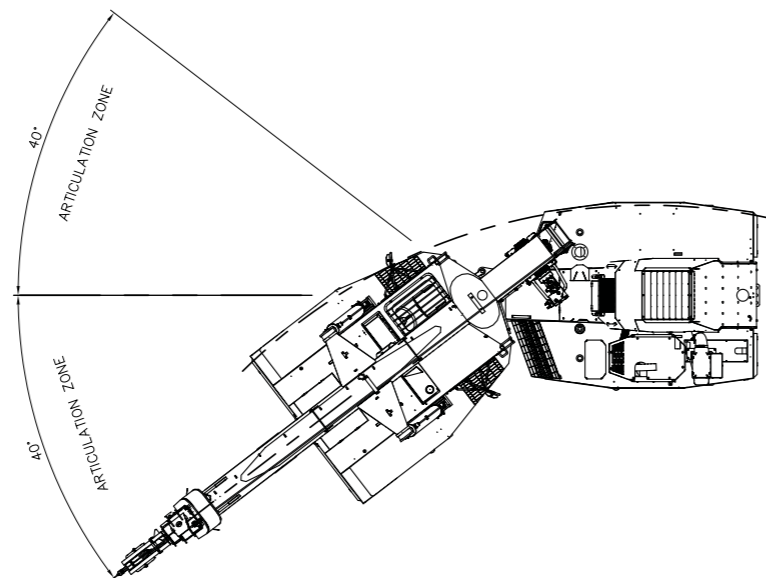
Aerial view



Front View



Area of operation



NOTE: Rated Capacity values shown are for the Pick and Carry Chart.





# OUR LOCATIONS

PT. Berlian Cranserco Indonesia



## Head Office Balikpapan

Jl. Mulawarman No.71, RT32  
Sepinggang Raya, Balikpapan Selatan  
Balikpapan 76115 - Kalimantan Timur, Indonesia  
**Tel.** +62 542 762 297

## Pekanbaru

**Graha Sucofindo** 1st Floor  
Jln. Jend. Achmad Yani No. 79  
Pekanbaru - Riau 28115  
**Tel.** +62 811 3943 821

## Papua

**PT. Freeport Indonesia**  
32HD Shop, Mil 32  
Tembagapura  
**Tel.** +62 811 5422 034

## Jakarta

**CIBIS Park**  
Gedung CIBIS Eight, 3rd Floor no. 5  
Jl. TB Simatupang No. 2  
Jakarta Selatan 12560, Indonesia  
**Tel.** +62 21 780 2269

## Surabaya

**AMG Tower**  
8th Floor, Unit B.02A  
Jl. Dukuh Menanggal No.1 A, Dukuh  
Menanggal, Kec. Gayungan,  
Surabaya, Jawa Timur 60234  
**Tel.** +62 811 5966 682

## Sumbawa

**PT. Amman Mineral Nusa Tenggara**  
Fleet Mews Maintenance  
Concentrator  
Sumbawa - Nusa Tenggara Barat  
**Tel.** +62 811 5910 166

**Email:** [sales@cranserco.com](mailto:sales@cranserco.com)

Follow us on



The information contained in this leaflet is intended to be of general nature.  
Terex Corporation reserves the right to change the specifications without prior notice.  
All dimensions and weights are variable within  $\pm 5\%$

Published and Printed in 2023



[www.cranserco.com](http://www.cranserco.com)

