



MAC25-5

PICK AND CARRY CRANE



MAXIMUM CAPACITY
25t



MAXIMUM BOOM LENGTH
18.4m



MAXIMUM HOOK HEIGHT
18m

OVERVIEW

The MAC25-5 is a mobile articulated crane with a maximum lifting capacity of 25 tonne (27 USt). The MAC25-5 offers maximum safety, excellent roadability, intuitive operation and unmatched versatility. Over the years its design has been tried, tested and proven in a range of difficult lifting applications and is still a customer favourite today.

A superlift (SL) upgrade is also available on the MAC25-5 as an additional option. The SL kit works in tandem with the existing MAC25 counterweight, adding a low slung additional counterweight piece to the rear of the machine, increasing the rated capacity of the machine.



⚙️ KEY FEATURES AND BENEFITS:

- ▶ 25 tonne at 1.4m radius
- ▶ 14.8 tonne at 3.0m radius
- ▶ 1.8 tonne at 15.7m radius
- ▶ 18m hook height
- ▶ Single line pull 4.2 tonne
- ▶ Increased rated capacity of up to 30% with SL option
- ▶ Dynamic LMI (patent protected)*
- ▶ Safety Radar (patent pending)
- ▶ Unique boom head design allows for maximum clearance
- ▶ Easy access to all key maintenance points

*Refer to www.terex.com/en/company/intellectual-property/franna-patents for current patent details

TECHNICAL DESCRIPTION

01. Boom

Maximum boom length	18.4m
Maximum hook height	18m
Boom elevation angle range	-10° / 65°
Maximum hook height with jib	20.5m
Articulation	40° R / 40° L
Machinery hook	15 tonne

02. Winch

Maximum line pull	4.2 tonne
Two speed winch	38m/min / 76m/min
Hook block (6 part)	25 tonne maximum rated capacity

03. Engine & Transmission

Standard engine	Mercedes OM936
Engine power	210kW
Engine torque	1200Nm
Fuel Type	Diesel
Fuel Tank Capacity	440 litres
Transmission	Allison 6 speed
Transfer case	ZF 2:1 Ratio
DEF Tank Capacity	38 litres
Emissions compliance	Tier 4f/Stage 5

04. Hydraulic System

Axial piston pump	62cc/rev
Maximum pump flow rate	130 litres/min
Maximum working pressure	250 bar
Hydraulic tank capacity	380 litres

05. Chassis

Front Axle	11,900 kg
Rear Axle	12,000kg
Axle total	23,900 kg
Turning radius	8.3m
Tyre Size	14.00 x 2.0

06. Brakes & Suspension

Brake System	Air operated drum brakes with ABS
Suspension	Elliptic springs with hydraulic spring lockouts on front axle

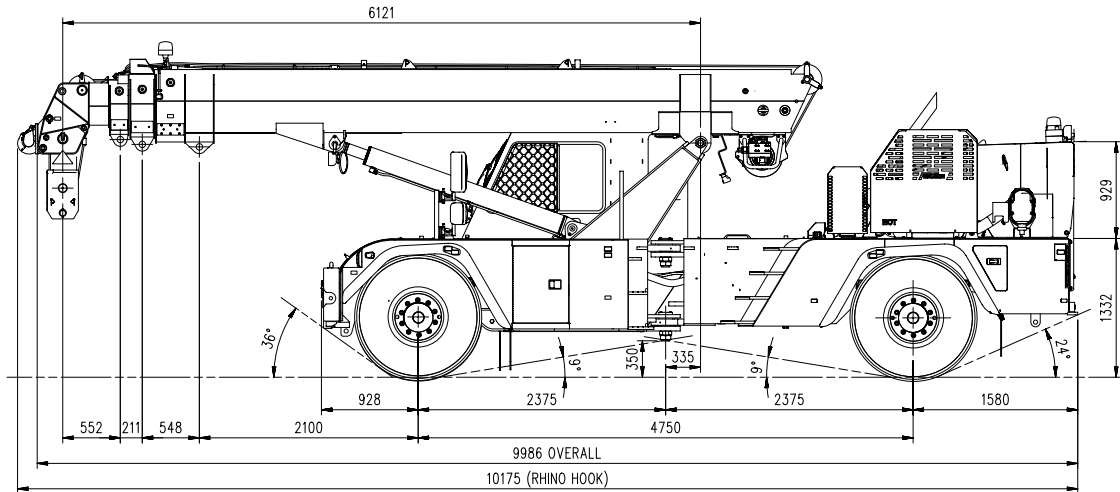
07. Vehicle Performance

Maximum rated travel speed	80 km/h
----------------------------	---------

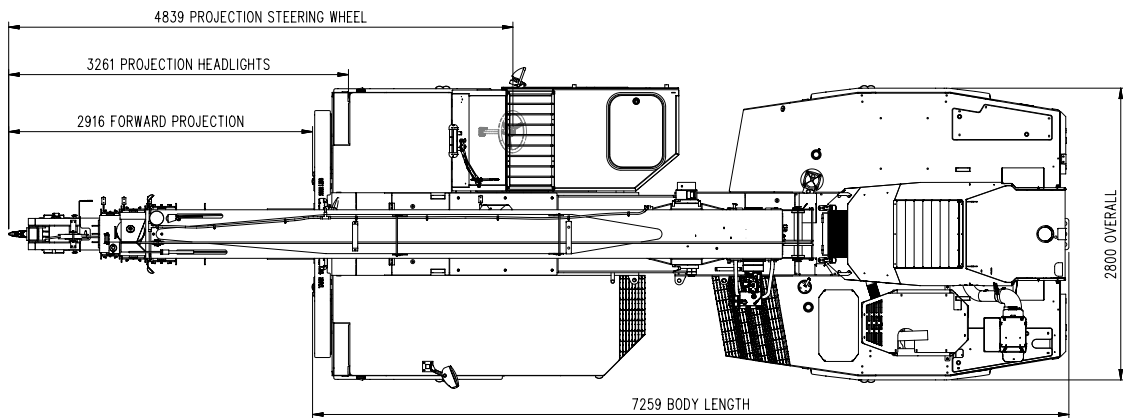


DIMENSIONS / AREA OF OPERATION

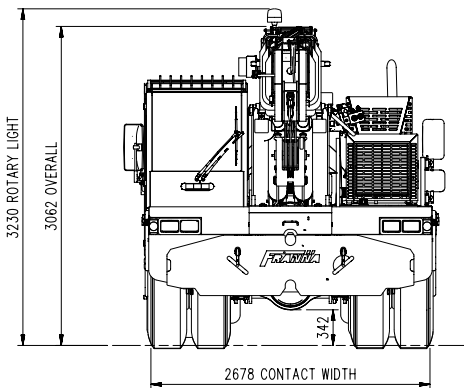
Side view



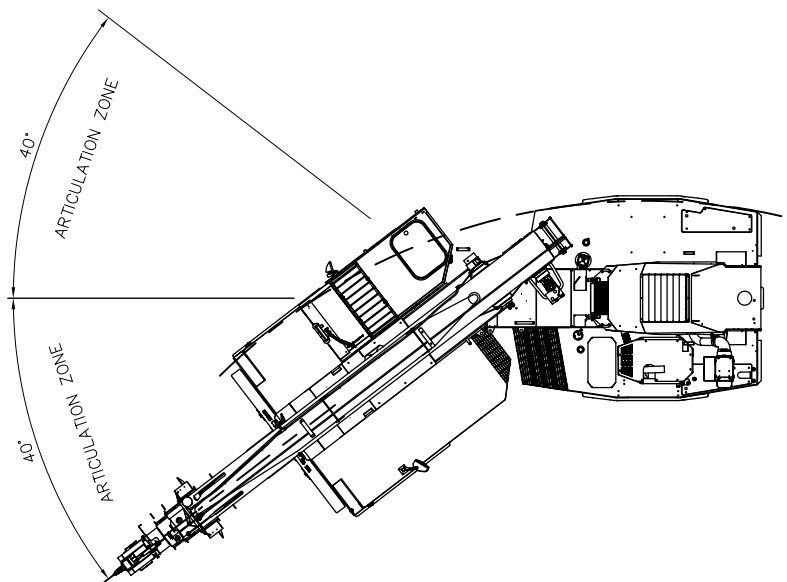
Aerial view



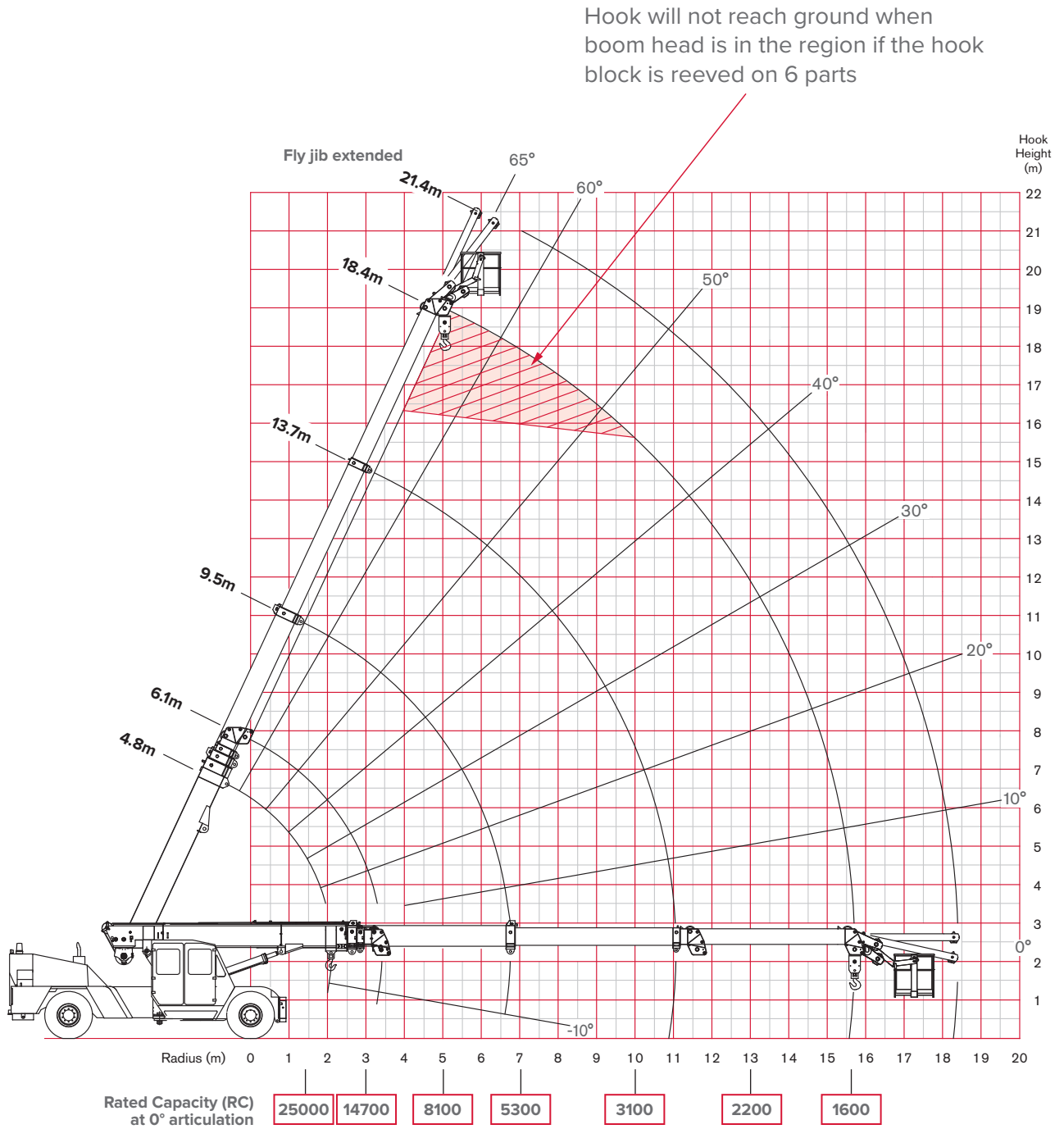
Front View



Area of operation



RADIUS LOAD CHART



NOTE: Rated Capacity values shown are for the Pick and Carry Chart.

LOAD CHART

RATED CAPACITY CHART PICK AND CARRY - FALL BLOCK

Duty: **201**

COUNTERWEIGHT: STANDARD
 POSITION: REAR OF CRANE
 STANDARD: ISO 4305

Rad	BOOM PIVOT TO HEAD SHEAVES - 3rd BOOM RETRACTED													3rd BOOM EXTENDING				Rad
	6.12	6.50	7.00	7.50	8.00	8.50	9.00	9.50	10.00	11.00	12.00	13.00	14.00	15.00	16.00	17.00	18.42	
1.4	25000	25000	25000	25000	24500	23900												
	24800	24800	24800	24700	24500	23900												
2.0	49	52	56	58	61	63												
	22900	22800	22800	22800	22700	22700	22300	21900										
2.5	20500	20400	20400	20300	20300	19700	18100	16700										
	41	45	49	52	55	58	60	62										
3.0	18000	18000	17900	17900	17900	17800	17800	17800										
	17200	17200	17200	17100	17100	17100	17000	17000	17000									
3.5	16000	16000	16000	16000	15900	15900	15700	14600	13600									
	33	38	43	47	51	54	56	58	60									
4.0	14700	14700	14700	14600	14600	14600	14600	14500	14500	14500								
	14100	14000	14000	14000	14000	14000	13900	13900	13900	13900	13000							
4.5	13100	13100	13100	13000	13000	13000	13000	12900	12100	10700	9600							
	22	30	36	41	46	49	52	54	57	60	64							
5.0	12400	12300	12300	12300	12300	12300	12300	12200	12200	12200	12200							
	11800	11800	11800	11800	11800	11700	11700	11700	11700	11700	11600	10700						
5.5	11000	11000	11000	10900	10900	10900	10900	10900	10900	9700	8700	7900						
	(3.5)	19	28	35	40	44	47	50	53	57	61	63						
6.0	11000	10600	10600	10600	10500	10500	10500	10500	10500	10500	10400	10400						
	10500	10100	10100	10100	10100	10000	10000	10000	10000	10000	9900	9100						
6.5	9700	9400	9400	9400	9300	9300	9300	9300	8900	8000	7200	6600						
	(3.9)	18	27	34	39	43	46	49	54	58	61	63						
7.0	9500	8300	8100	8100	8100	8100	8100	8100	8100	8000	8000	8000	8100	8200				
	9100	7900	7700	7700	7700	7700	7700	7700	7700	7600	7600	7600	7600	7000				
7.5	8400	7300	7100	7100	7100	7100	7100	7100	7100	6800	6200	5600	5300	5100				
	(4.4)	(4.9)	17	26	32	37	40	46	51	55	58	61	63					
8.0	7400	6600	6400	6400	6400	6400	6400	6400	6400	6400	6400	6500	6500	6600				
	7000	6300	6100	6100	6100	6100	6100	6100	6100	6100	6100	6100	6200	6100				
8.5	6500	5800	5600	5600	5600	5600	5600	5600	5600	5400	4900	4600	4400	4300				
	(5.4)	(5.9)	16	24	30	38	44	49	53	56	59	61						
9.0	5900	5400	5300	5300	5300	5300	5300	5200	5200	5300	5400	5500	5600					
	5600	5100	5000	5000	5000	5000	5000	5000	5000	5000	5000	5100	5200	5200				
9.5	5200	4700	4600	4600	4600	4600	4600	4600	4600	4400	4100	3900	3800	3600				
	(6.4)	(6.9)	15	29	37	42	47	51	54	57	60							
10.0	4900	4400	4400	4400	4400	4400	4400	4400	4400	4500	4600	4700						
	4600	4100	4100	4100	4100	4100	4100	4200	4300	4400	4400							
10.5	4200	3800	3800	3800	3800	3800	3800	3700	3500	3400	3200							
	(7.4)	14	27	35	41	45	49	52	56									
11.0	4100	3700	3700	3700	3700	3700	3700	3800	3800	3900	4000							
	3900	3500	3500	3500	3500	3500	3500	3500	3600	3700	3800							
11.5	3500	3200	3200	3200	3200	3200	3200	3200	3200	3100	2900							
	(8.4)	14	26	34	39	44	47	52										
12.0	3500	3100	3100	3200	3300	3400	3500											
	3300	2900	3000	3000	3100	3200	3300											
12.5	2900	2700	2700	2700	2800	2800	2800											
	(9.4)	13	25	33	38	42	47											
13.0	3000	2700	2800	2800	2900	3000												
	2800	2500	2600	2700	2700	2800												
13.5	2500	2300	2300	2400	2500	2500												
	(10.4)	13	24	32	37	43												
14.0	2500	2400	2500	2600	2600													
	2400	2200	2300	2400	2500													
14.5	2100	2000	2100	2100	2200													
	(11.4)	12	24	31	38													
15.0	2200	2200	2200	2300														
	2100	2000	2100	2200														
15.5	1900	1800	1900	2000														
	(12.4)	12	23	32														
16.0	2000	2000	2100															
	1700	1600	1700															
16.5	(13.4)	12	25															
	1900	1800	1900	2000														
17.0	1500	1500																
	(14.4)	17																
17.5	1600																	
	1300																	
18.0	(15.8)																	
	12.00	13.00	14.00	15.00	16.00	17.00	18.42											

WINCH RATED CAPACITY

SINGLE PART	4200
TWO PARTS	8400
FOUR PARTS	16800
SIX PARTS	25000

- UNITS:**
- ANGLES IN DEGREES
 - LENGTHS IN METRES
 - LOAD IN KILOGRAMS

KEY:

8100	RC @ ARTIC: 0°	PITCH: -2.3	ROLL: -0.6
7700	RC @ ARTIC: 25°	PITCH: -2.3	ROLL: -0.6
7100	RC @ ARTIC: 40°	PITCH: -2.3	ROLL: -0.6
17	BOOM ANGLE		
(5.9)	RADIUS AT ZERO BOOM ANGLE		

Note: Pitch & Roll angles indicated reference the cranes chassis angles, for other chassis angles refer to Franna Lift Planner.

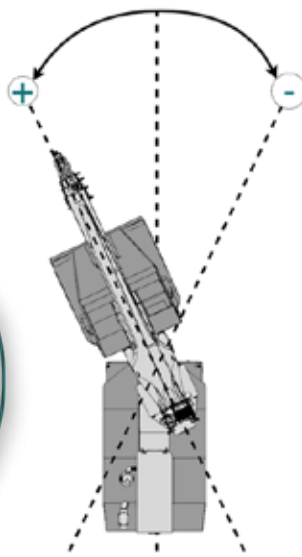
NEW LIFT PLANNER



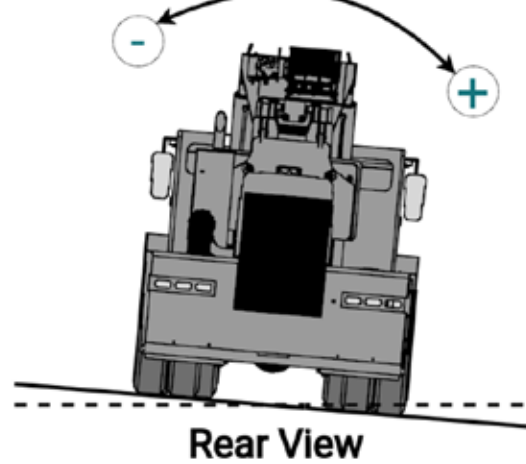
AVAILABLE NOW ON ALL MODELS



Articulation Angle

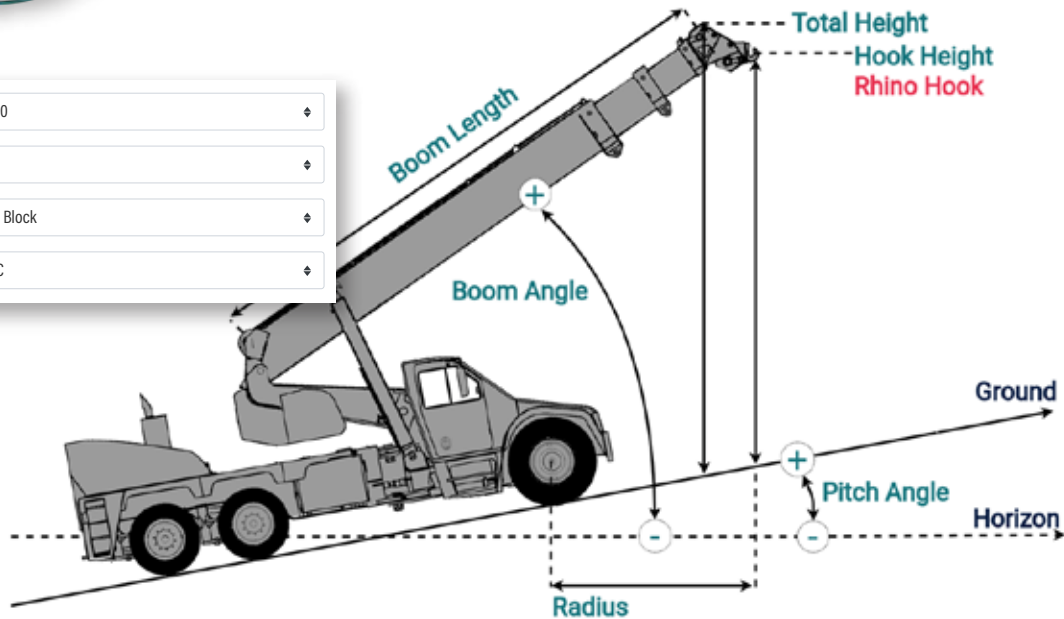


Roll Angle



Rear View

1	Model	AT40	▾
2	LMI	IC-1	▾
3	Configuration	Fall Block	▾
4	Type	PNC	▾



WWW.FRANNALIFTPLANNER.COM.AU



OUR LOCATIONS

PT. Berlian Cranserco Indonesia



Head Office Balikpapan

Jl. Mulawarman No.71, RT32
Sepinggang Raya, Balikpapan Selatan
Balikpapan 76115 - Kalimantan Timur, Indonesia
Tel. +62 542 762 297

Pekanbaru

Graha Sucofindo 1st Floor
Jln. Jend. Achmad Yani No. 79
Pekanbaru - Riau 28115
Tel. +62 811 3943 821

Papua

PT. Freeport Indonesia
32HD Shop, Mil 32
Tembagapura
Tel. +62 811 5422 034

Jakarta

CIBIS Park
Gedung CIBIS Eight, 3rd Floor no. 5
Jl. TB Simatupang No. 2
Jakarta Selatan 12560, Indonesia
Tel. +62 21 780 2269

Surabaya

AMG Tower
8th Floor, Unit B.02A
Jl. Dukuh Menanggal No.1 A, Dukuh
Menanggal, Kec. Gayungan,
Surabaya, Jawa Timur 60234
Tel. +62 811 5966 682

Sumbawa

PT. Amman Mineral Nusa Tenggara
Fleet Mews Maintenance
Concentrator
Sumbawa - Nusa Tenggara Barat
Tel. +62 811 5910 166

Email: sales@cranserco.com

Follow us on



The information contained in this leaflet is intended to be of general nature.
Terex Corporation reserves the right to change the specifications without prior notice.
All dimensions and weights are variable within $\pm 5\%$

Published and Printed in 2023



www.cranserco.com

