



TECHNICAL DATASHEET



# AT40-2

PICK AND CARRY CRANE



MAXIMUM CAPACITY  
**40t**



MAXIMUM BOOM LENGTH  
**19.8m**



MAXIMUM HOOK HEIGHT  
**19m**

[terex.com/franna](https://terex.com/franna)

# OVERVIEW

The AT40-2 is the largest pick and carry crane in the Franna product range and has been specifically designed for higher capacity lifting applications, boasting 44% more load moment capacity than the Franna MAC25-5. The 3-axle design eliminates the need for a removable counterweight and the third axle control system raises axle 3 when operating on a work site to provide a reduced turning circle.



## KEY FEATURES AND BENEFITS:

- ▶ 40 tonne at 1.1m radius on lug
- ▶ 35 tonne at 2.0m radius on 8 part hook block
- ▶ 20 tonne on machinery (Rhino) hook
- ▶ 19m maximum hook height
- ▶ Single line pull 4.3 tonne
- ▶ Dynamic LMI (patent protected)\*
- ▶ Safety Radar (patent pending)
- ▶ Designed to AS1418.5 (2013)
- ▶ Full width isolated cabin ensures excellent visibility
- ▶ Traction Control
- ▶ High strength boom with easy maintenance
- ▶ Hydro-pneumatic suspension enhances roadability

\*Refer to [www.terex.com/en/company/intellectual-property/franna-patents](http://www.terex.com/en/company/intellectual-property/franna-patents) for current patent details

# TECHNICAL DESCRIPTION

## 01. Boom

Maximum boom length	19.8m
Maximum hook height	19.0m
Boom elevation angle range	-5°/60°
Articulation	35° R / 35° L
Fixed lug	40 tonne
Machinery hook (rhino)	20 tonne

## 02. Winch

Maximum line pull	4.3 tonne
Two speed winch	38 m/min / 76 m/min
7 Part Hook block	30 tonne maximum rated capacity
Optional 8 Part Hook block	35 tonne maximum rated capacity

## 03. Engine & Transmission

Standard engine	Mercedes OM936
Engine power	230kW
Engine torque	1300Nm
Fuel Type	Diesel
Fuel tank capacity	500 litres
Transmission	Allison 6 speed
Transfer case	ZF 2:1 Ratio
DEF tank capacity	38 litres
Emissions compliance	Tier 4f/Stage 5

## 04. Hydraulic System

Axial piston pump	135cc/rev
Maximum pump flow rate	300 litres/min
Maximum working pressure	350 bar
Hydraulic tank capacity	500 litres

## 05. Chassis

Front Axle (Tare / GVM)	11,100kg / 12,000kg
Axle 2 (Tare / GVM)	9,200kg / 10,000kg
Axle 3 (Tare / GVM)	9,200kg / 10,000kg
Axle Total (Tare / GVM)	29,500kg / 32,000kg
Transport weight	30,300 kg
Turning circle (Highway)	10.2m
Turning circle (crane mode)	9.3m
Front Tyres	385/95 x R25
Rear Tyres	315/80 x R22.5

## 06. Brakes & Suspension

Brake System	Air operated disc brakes with ABS
Suspension	Hydro pneumatic suspension

## 07. Vehicle Performance

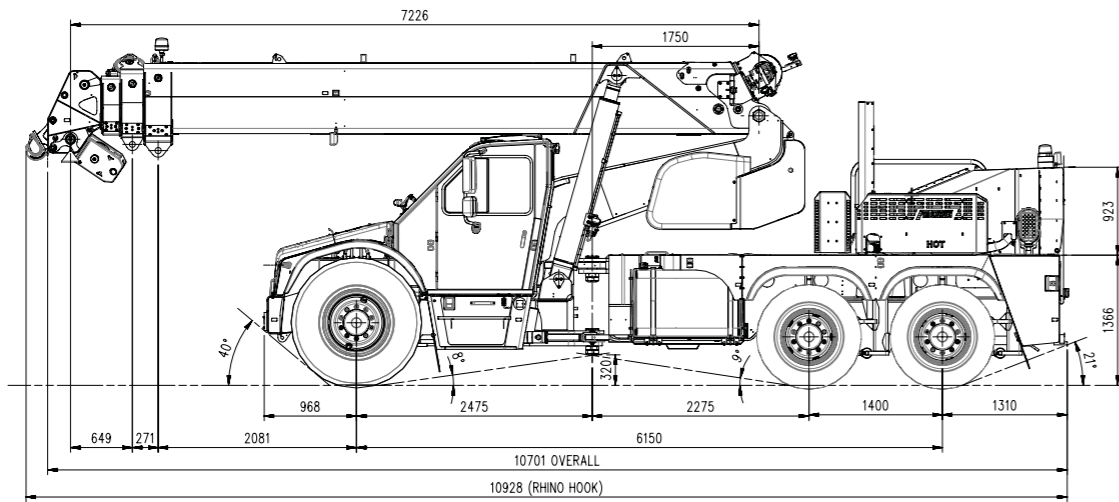
Maximum rated travel speed	80km/h
----------------------------	--------



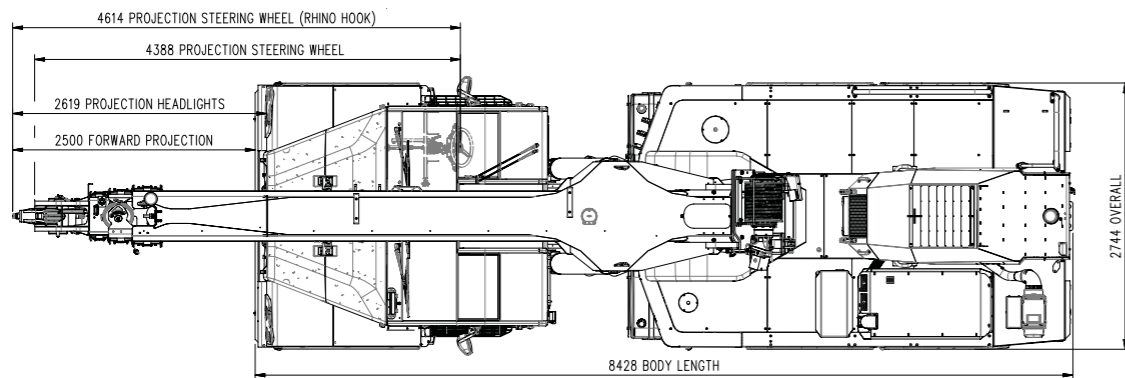
# DIMENSIONS / AREA OF OPERATION

# RADIUS LOAD CHART

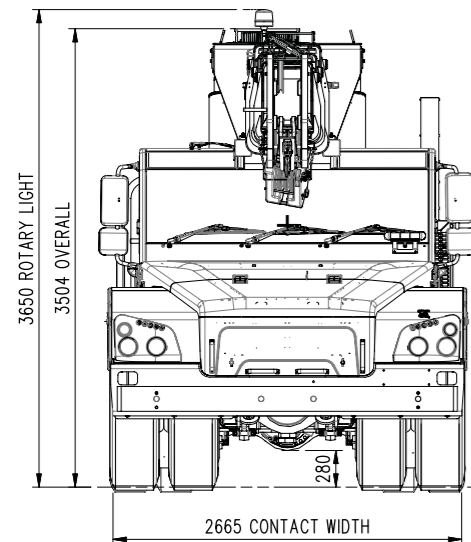
Side view



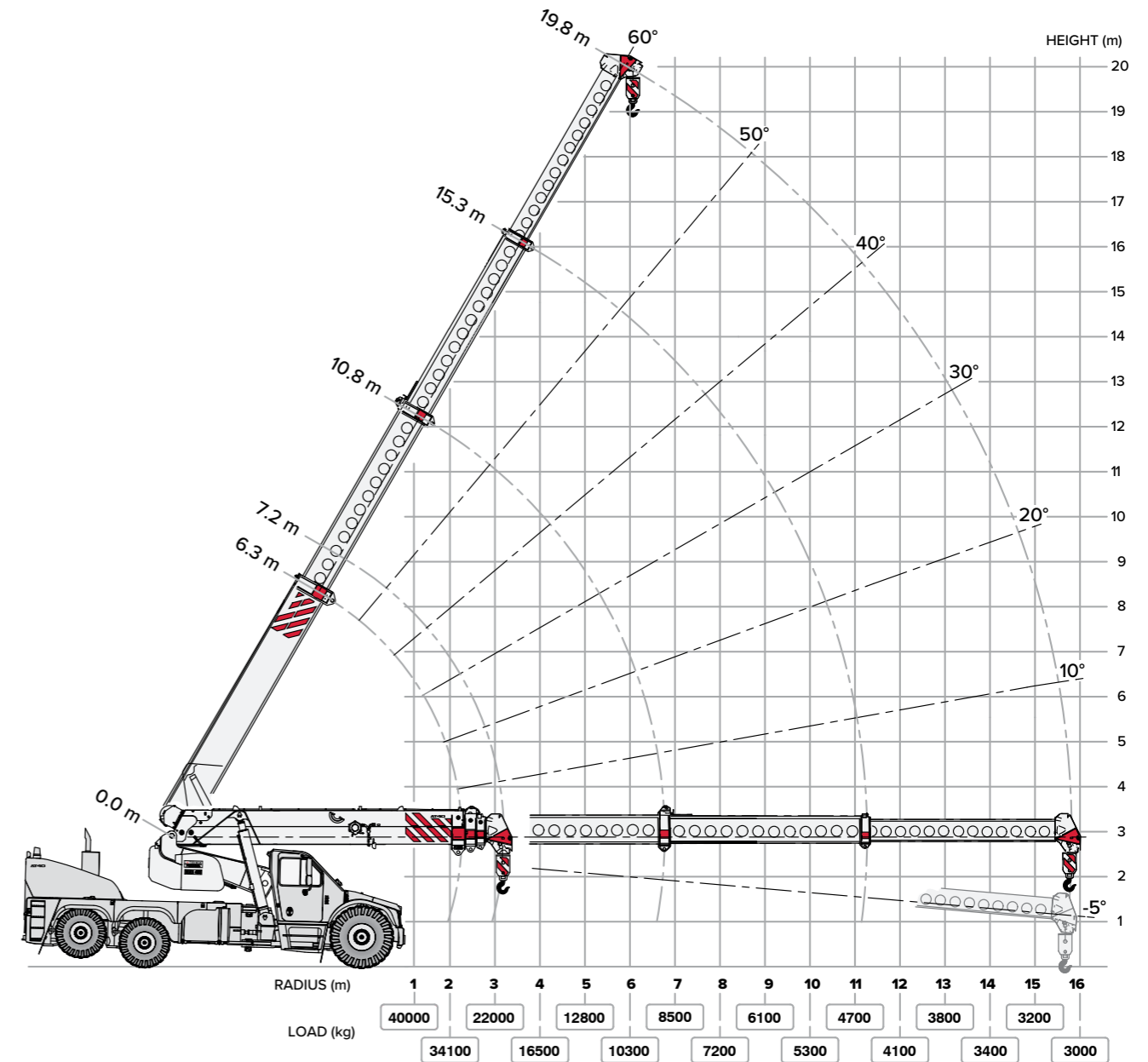
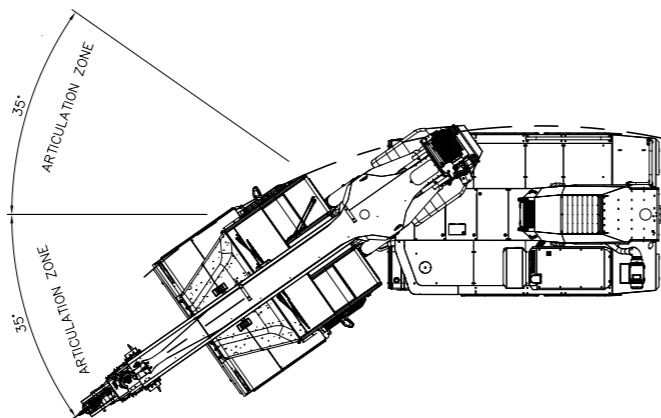
Aerial view



Front View



Area of operation



NOTE: Rated Capacity values shown are for the Pick and Carry Chart. The Static Chart will give higher rated capacities.





# OUR LOCATIONS

PT. Berlian Cranserco Indonesia



## Head Office Balikpapan

Jl. Mulawarman No.71, RT32  
Sepinggang Raya, Balikpapan Selatan  
Balikpapan 76115 - Kalimantan Timur, Indonesia  
**Tel.** +62 542 762 297

## Pekanbaru

**Graha Sucofindo** 1st Floor  
Jln. Jend. Achmad Yani No. 79  
Pekanbaru - Riau 28115  
**Tel.** +62 811 3943 821

## Papua

**PT. Freeport Indonesia**  
32HD Shop, Mil 32  
Tembagapura  
**Tel.** +62 811 5422 034

## Jakarta

**CIBIS Park**  
Gedung CIBIS Eight, 3rd Floor no. 5  
Jl. TB Simatupang No. 2  
Jakarta Selatan 12560, Indonesia  
**Tel.** +62 21 780 2269

## Surabaya

**AMG Tower**  
8th Floor, Unit B.02A  
Jl. Dukuh Menanggal No.1 A, Dukuh  
Menanggal, Kec. Gayungan,  
Surabaya, Jawa Timur 60234  
**Tel.** +62 811 5966 682

## Sumbawa

**PT. Amman Mineral Nusa Tenggara**  
Fleet Mews Maintenance  
Concentrator  
Sumbawa - Nusa Tenggara Barat  
**Tel.** +62 811 5910 166

**Email:** [sales@cranserco.com](mailto:sales@cranserco.com)

Follow us on



The information contained in this leaflet is intended to be of general nature.  
Terex Corporation reserves the right to change the specifications without prior notice.  
All dimensions and weights are variable within  $\pm 5\%$

Published and Printed in 2023



[www.cranserco.com](http://www.cranserco.com)

