

# FR15 T

PICK AND CARRY  
CRANE



MAXIMUM RATED CAPACITY  
**15 t**



MAXIMUM BOOM LENGTH  
**18.23 m**   **20.83 m**  
(manual extension)   (with fly jib)



HD WINCH  
**3.5T**



COMPACT MACHINE  
**2.95 m**  
(Machine Height)



STABILITY  
**75%**



# OVERVIEW

The FR15 T is a very compact pick and carry mobile crane from Franna product range and is specially designed for Indian market for higher lifting capacity applications (up to 15 Ton) with 75% stability factor. This 4WD crane has a powerful CEV Stage-III emission compliance engine, with heavy duty Auxiliary Gear Box (AGB) and axles for all type of crane application.

This crane combines safety and comfort with smooth steering flexibility, providing the operator with the ability to lift and maneuver in tight spaces. The heavy-duty U section fabricated boom with welding on the neutral axis offers superior durability and a competitive edge while lifting heavy loads.



Connec-T\*



Smooth Clutch



Manual Boom Extension rod



5 Hook Positionings



Articulation Limit Switch



3.5T HD Winch



Single Luff Cylinder



Lowest Turning Radius



U-Section Boom



Winch Mounted under Boom



\*Under Development

# TECHNICAL DESCRIPTION

01. Boom	
Maximum boom length (manual extrn.)	18.23 m
Maximum boom length (fly jib)	20.83 m
Maximum tip height (fly jib)	20.4 m
Boom elevation angle range	-6°/60°
Articulation	40° R / 40° L
Fixed lug	15 tonne
Machinery hook (rhino)	8 tonne

02. Winch	
Maximum Line Pull (1st layer)	3.5 tonne
Single speed winch (raising 4th layer)	51 m/min
4 Part Hook block	Fully compensated hook height whilst telescoping the boom

03. Engine & Transmission	
Standard engine	TATA 497 CEV Stage III
Engine power	101 PS@2200 rpm
Engine torque	375 Nm
Fuel Type	Diesel
Fuel Capacity	230 litre
Transmission	TATA Synchromesh gear box with 10 forward and 2 reverse speeds with crane/travel mode selector switch
Clutch	Single, dry type friction clutch plate (self-adjusting)
Clutch Actuation	Pneumatic assisted hydraulic clutch with clutch booster provision

04. Hydraulic System	
High Pressure Vane pump	46 cc/rev
Maximum working pressure	220 bar
Hydraulic Oil	210 bar
2000Hrs Replacement Interval	

05. Axle Loadings (with attachments) & Turning Radius	
Front Axle	6780 kg
Rear Axle	9170 kg
Total	15950 kg
Turning Radius	6.77 m

06. Brakes	
Service	Fully air operated 'S'cam dual circuit brakes on front & rear axles
Parking	Air operated, spring actuated, fail safe brakes

07. Tyres & Rims	
Front	11.00x20-16PR (4 No.)
Rear	11.00x20-16PR (4 No.)

08. Electricals	
System	12V DC

09. Steering	
Steering	Full power orbital motor with twin cushioned double acting rams with 40 deg articulation either side

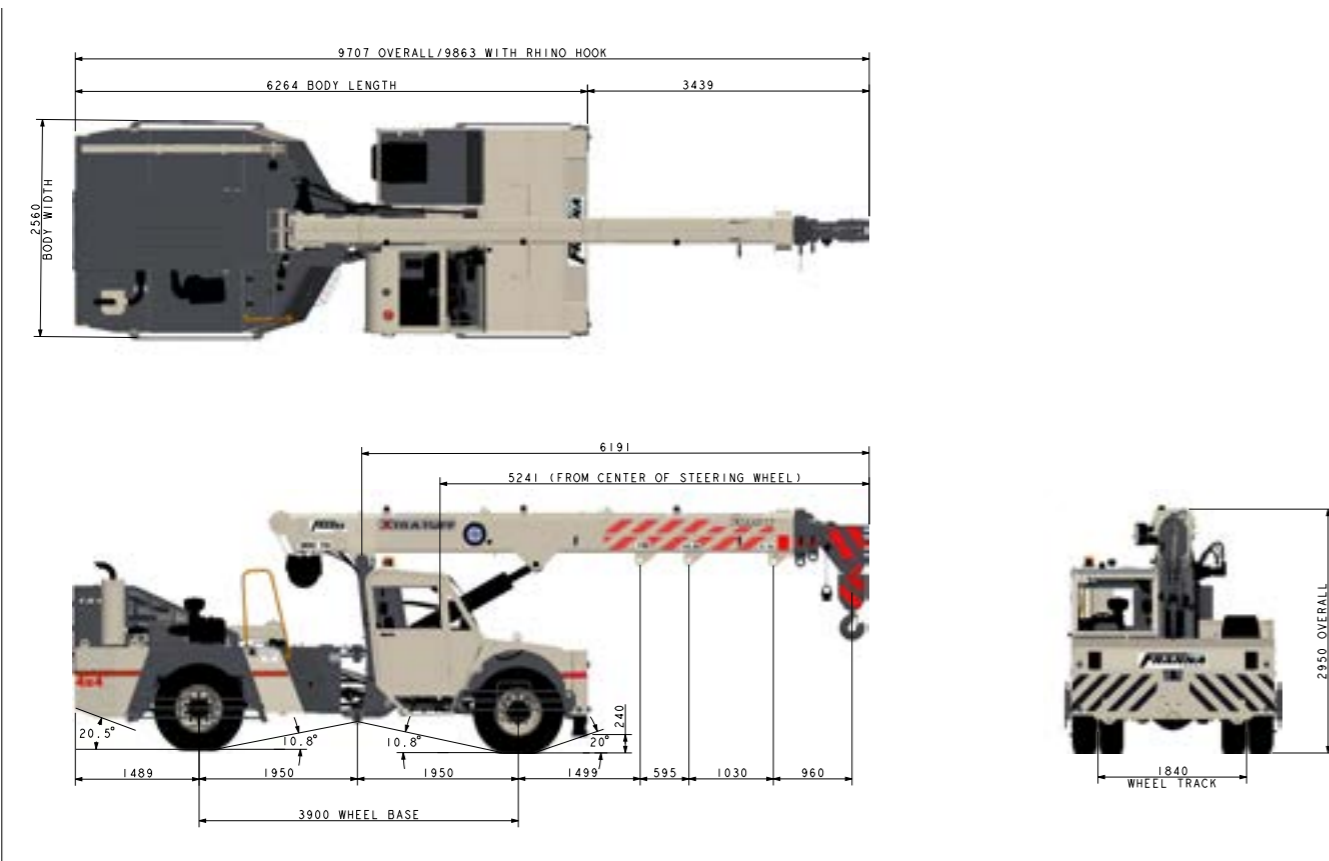
10. Vehicle Performance & Drive	
Max Speed	49 km/h
Gradeability	30% (laden), 40% (unladen)
Drive	4x4

**Options available at additional cost:**  
 3 Stack Lamp  
 SLI with Safe operation feature  
 Human proximity sensor  
 Outrigger Engagement warning  
 Boom Angle Indicator  
 Machine Level Indicator  
 Beacon Light  
 Cabin Safety grill

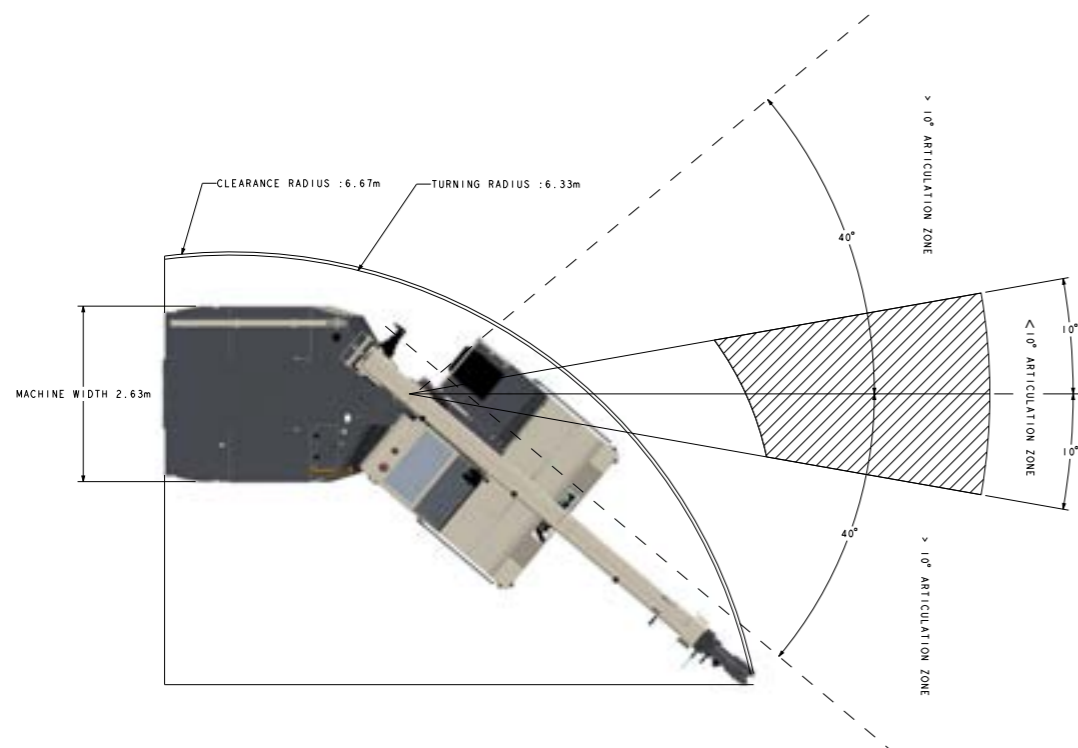


# DIMENSIONS / AREA OF OPERATION

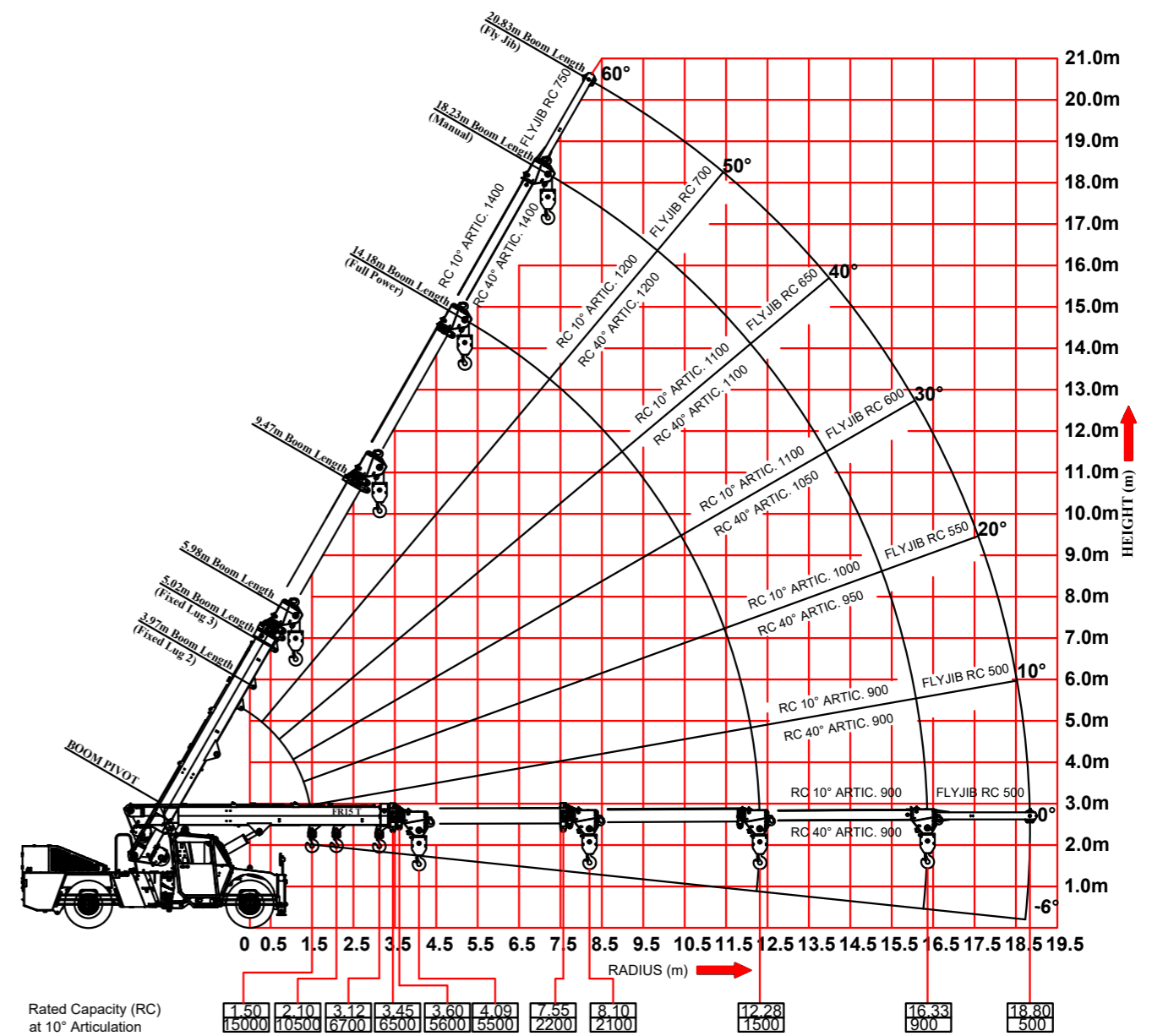
## Machine view (All dimensions are in mm)



## Area of operation



# RADIUS LOAD CHART



## Note:

- RADIUS IS THE HORIZONTAL DISTANCE MEASURED FROM THE CENTER OF FRONT WHEEL TO THE LOAD POINT.
- S.W.L ARE BASED ON FIRM LEVEL GROUND WITH TYRES 11x20-16 PLY INFLATED TO 112 PSI, WEIGHT OF HOOKS, BLOCKS, SLINGS & CHAIN ETC INCLUDED
- LIFT AND CARRY - THE S.W.L SHALL BE CARRIED WITH THE MINIMUM BOOM LENGTH & AS CLOSE TO THE GROUND AS POSSIBLE AT SPEEDS NOT IN EXCESS OF <1.6 KMPH.
- BOOM HEAD MOUNTED RHINO HOOK MAX CAPACITY - 8000 KG (REFER LOAD CHART FOR LOAD CAPACITY OF RHINO HOOK)
- CRANE SHOULD NOT BE OVERLOADED BEYOND 15 TON AT ANY CONDITION

# LOAD CHART

RATED CAPACITY CHART - LIFTING ON WINCH FALL BLOCK																		
RADIUS	BOOM LENGTH (m)																	
	5.98	6.50	7.00	7.50	8.00	8.50	9.00	9.50	10.00	10.50	11.00	11.50	12.00	12.50	13.00	13.50	14.00	14.18
1.5	9700	10000																
	9700	9800																
	56	59																
2.0	9600	9700	9800	9800	9800													
	9600	9700	9800	9800	9800													
	49	53	56	59	60													
2.5	9400	9500	9700	9700	9700	9700	9700											
	9400	9500	9700	9700	9700	9700	9700											
	43	48	51	54	57	59	60											
3.0	8600	8600	8600	8600	8500	8500	8400	8300	8300									
	7600	7600	7600	7600	7500	7500	7400	7800	7800									
	35	41	46	49	52	55	57	59	60									
3.5	7400	7400	7300	7300	7300	7300	7200	7200	7200	7100	7100							
	6500	6500	6900	6900	6900	6900	6800	6800	6800	6700	6700							
	26	34	40	44	48	51	53	55	57	59	60							
4.0	6700	6700	6700	6600	6600	6500	6500	6500	6500	6400	6100	5400	5200					
	5900	5900	5900	5800	5800	5800	5800	5800	5800	5700	5700	5400	5200					
	10	25	33	38	43	46	49	52	54	56	58	59	60					
4.5	5500	5400	5400	5400	5400	5400	5400	5300	5300	5300	5200	4900	4700	4500				
	5200	5000	5000	5000	5000	5000	5000	4800	4800	4800	4700	4600	4600	4500				
	(4.09)	10	24	32	37	41	45	48	50	53	54	56	58	59	60			
5.0	5300	4900	4900	4800	4800	4800	4800	4800	4800	4800	4800	4700	4500	4200	3900	3800	3800	
	4900	4400	4400	4400	4400	4400	4400	4400	4400	4400	4400	4300	4500	4200	3900	3800	3800	
	(4.60)	10	23	31	36	40	44	46	49	51	53	55	57	58	59	60	60	
6.0	4800	4400	4200	4200	4200	4200	4200	4200	4100	4100	4000	3900	3700	3600	3400	3400	3400	
	4300	3900	3700	3700	3700	3700	3700	3700	3700	3600	3600	3600	3600	3500	3500	3400	3400	
	(5.10)	(5.60)	9	22	29	34	38	41	44	47	49	51	53	54	56	56	56	
7.0				3500	3100	2900	2900	2900	2900	2900	2900	2900	2900	2900	2900	2900	2900	
				3100	2800	2600	2600	2600	2600	2500	2500	2500	2500	2500	2500	2500	2500	
				(6.10)	(6.60)	9	21	27	32	36	39	42	45	47	49	51	51	
8.0						2800	2800	2200	2200	2200	2200	2200	2200	2200	2200	2100	2100	
						2500	2500	2000	2000	2000	2000	2000	2000	2000	2000	1900	1900	
						(7.10)	(7.60)	8	20	26	31	34	38	40	43	45	46	
9.0								2100	2100	2100	2100	2100	2100	2100	2000	2000	2000	
								1900	1900	1900	1900	1900	1900	1900	1800	1800	1800	
								(8.10)	(8.60)	8	19	25	29	33	36	39	40	
10.0										2000	2000	2000	2000	2000	1900	1900	1900	
										1800	1800	1800	1800	1800	1700	1700	1700	
										(9.10)	(9.60)	8	18	24	28	32	33	
11.0												1900	1900	1900	1800	1800	1800	
												1600	1600	1600	1600	1600	1500	
												(10.10)	(10.60)	7	17	23	25	
12.3														1800	1600	1500	1500	
														1400	1300	1200	1200	
														(11.10)	(11.60)	(12.10)	(12.28)	

**KEY:**  
 SWL (KG) LESS THAN 10 DEG ARTICULATION  
 SWL (KG) GREATER THAN 10 DEG ARTICULATION  
 BOOM ANGLE OR (RADIUS AT 0 DEG BOOM ANGLE)

Note: Weight of slings & hook block to be added to load  
 Read and understand warning notes before operating crane

# FEATURES & ATTACHMENTS



**NEUTRAL AXIS WELDING BOOM**  
 Latest boom technology for Heavy duty applications. U-section ensures higher lifting capacity with longer life

**COMPACT MACHINE**  
 Shortest Turning radius of 6.7 meter makes it ideal machine for City and congested areas.



**WINCH MOUNTING**  
 Under boom winch ensures safe operations while working in compact area. Ideal for city and industrial applications

**75% STABILITY**  
 Higher safety and stability reduces the chances of accident.

**75%**



**MANUAL EXTENSION ROD**  
 Quick and reliable mechanism for higher height applications

**CONNEX-T\***  
 24X7 machine update on location, health and performance on one click

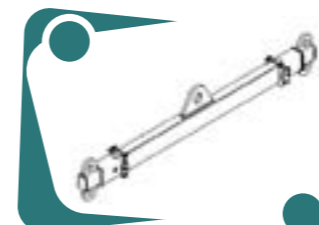
\*Optional



**SINGLE LUFF CYLINDER**  
 Increases the visibility and reduces the maintenance.

**MAN BASKET**  
 250 kg capacity with self-leveling mechanism

\*Optional Attachment



**SPREADER BAR**  
 Ideal for oversize load lifting application. Helpful for pipe, steel bars lifting

\*Optional Attachment

\*Under Development

# OUR LOCATIONS

PT. Berlian Cranserco Indonesia



## Head Office Balikpapan

Jl. Mulawarman No.71, RT32  
Sepinggang Raya, Balikpapan Selatan  
Balikpapan 76115 - Kalimantan Timur, Indonesia  
**Tel.** +62 542 762 297

## Pekanbaru

**Graha Sucofindo** 1st Floor  
Jln. Jend. Achmad Yani No. 79  
Pekanbaru - Riau 28115  
**Tel.** +62 811 3943 821

## Papua

**PT. Freeport Indonesia**  
32HD Shop, Mil 32  
Tembagapura  
**Tel.** +62 811 5422 034

## Jakarta

**CIBIS Park**  
Gedung CIBIS Eight, 3rd Floor no. 5  
Jl. TB Simatupang No. 2  
Jakarta Selatan 12560, Indonesia  
**Tel.** +62 21 780 2269

## Surabaya

**AMG Tower**  
8th Floor, Unit B.02A  
Jl. Dukuh Menanggal No.1 A, Dukuh  
Menanggal, Kec. Gayungan,  
Surabaya, Jawa Timur 60234  
**Tel.** +62 811 5966 682

## Sumbawa

**PT. Amman Mineral Nusa Tenggara**  
Fleet Mews Maintenance  
Concentrator  
Sumbawa - Nusa Tenggara Barat  
**Tel.** +62 811 5910 166

**Email:** [sales@cranserco.com](mailto:sales@cranserco.com)

Follow us on



The information contained in this leaflet is intended to be of general nature.  
Terex Corporation reserves the right to change the specifications without prior notice.  
All dimensions and weights are variable within  $\pm 5\%$

Published and Printed in 2023



[www.cranserco.com](http://www.cranserco.com)

