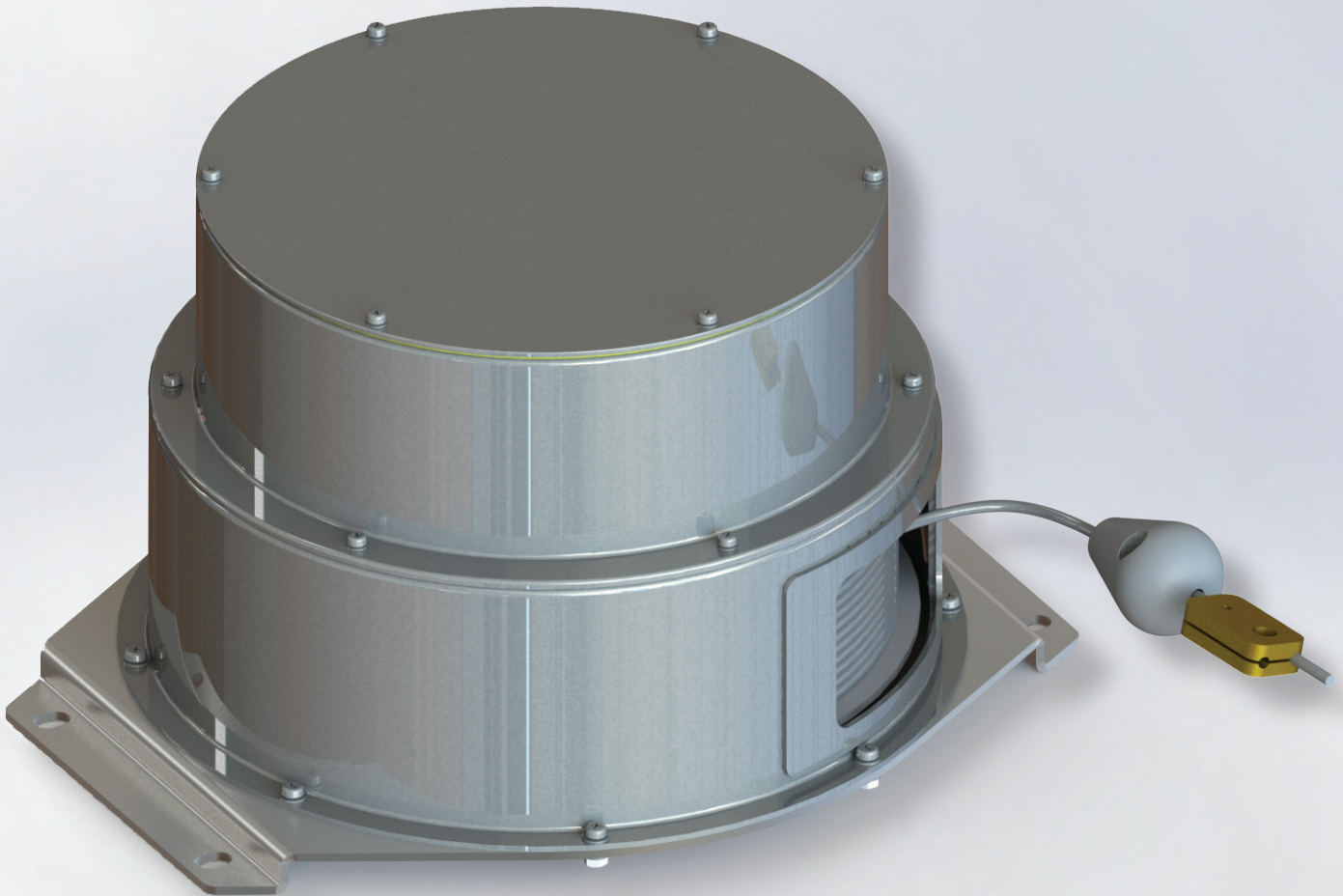


# ATEX/IECEX Cable Reels

Boom length / Up to 6-core payout cable



- ▶ Extension ranges from 6 - 60m
- ▶ Six slip rings
- ▶ Variety of factory-installed payout cable options
- ▶ Variety of factory-installed I/S cable options
- ▶ Group IIC, Zone 1



# Robway ATEX/IECEX Cable Reels

## Cable Reels

Model Number Definition: DRXa-bb-cc-d-e where:

"a" refers to Zone, 1=Zone1 and 2=Zone2

"bbb" refers to Diameter of inner drum in mm

"cc" refers to drum turns

"d" refers to # slip rings, 0= no slip rings, length only cable reels

"e" refers to direction, R=CW, L=CCW

Order number	Drum Inner Dia	Drum Outer Dia	Drum Inner Width	Drum Turns	Slip Rings	Payout direction	Cable Entry	Dimensions (mm)			
								A	B	C	D
DRX1-205-35-6-R	205mm	240mm	60mm	35	6	CW	Exe gland	320	270	180	250
DRX1-205-35-6-L	205mm	240mm	60mm	35	6	CCW	Exe gland	320	270	180	250

- A. Overall width
- B. Overall height
- C. Depth
- D. Drum housing diameter

Note: Other configurations available but may have an MOQ. Please consult factory.

## Product Markings



II 2G Ex ib IIC T4 Gb

-20°C ≤ Ta ≤ +60°C

## Accessories

Order number	Description
KITDRUK5294-3	MTG kit 13m, 3 cable roller guides
KITDRUK5295-3	MTG kits 26m, 3 cable roller guides
KITDRUK5295-4	MTG kit 35m, 4 cable roller guides
KITDRUK5295-5	MTG kit 45/60m, 5 cable guides
KITDRUKCC3-BR	Kit cable clamp 3mm, brass clamp and thimble
KITDRUKCC5-BR	Kit cable clamp 5mm, brass clamp and thimble
BRACAB1431SS	Cable Roller Guide, SS316
Exe Cable Glands	Consult Factory
Payout Cable	Consult Factory
I/S Cable	Consult Factory



TECHNOLOGY  
PRODUCTS

**ROBWAY**

[WWW.CRANSERCO.COM](http://WWW.CRANSERCO.COM)