



SUPPLY SOLUTIONS

Product Support
Equipment Range
Technology Products

BERLIAN CRANSERCO INDONESIA

IN COUNTRY

Parts and Service Support
Training
Technical Support
Sales
Certified Technicians
Authorised Dealer



“World Class Products
and Support in Indonesia”





Letter from CEO

Cranserco started its journey from a simple idea to provide the Indonesian crane industry with a focused product support approach. The successes and lessons learnt since 2011 can be summarized in one word that is entrenched in the Cranserco way of doing business – Growth.

We have seen growth and development in all aspects of our business; service, parts, product sales, maintenance contracts, new customers, world class safety performance, training, and new product lines. However, one of the most satisfying areas of growth has been our people. Not only are we growing as a company in size and capability, but we are also seeing significant individual growth in our people's abilities, capacity, customer relationship skills, product knowledge and professionalism.

Since we started as a company, Cranserco has used growth as a concept that will drive innovation, passion, and excellence to continually deliver solutions to our customers. Growth is the key word our organisation uses to improve performance and efficiency.

Cranserco is now established in the Indonesian marketplace, our structure, people, products, and processes enable us to delivery excellence to the industry so our customers can operate safely and efficiently. To continue our desire for growth we are constantly looking at new opportunities to further grow the company efficiently and safely.

The Cranserco team is looking forward to the future and the challenges to come by using our collective intellect and practical approach to find solutions and support for our customers.

We are well positioned for the future with industry leading products, focused management, safety systems and certified technicians, all available in Indonesia.

James Hoyt
Director



VISION

- 01** Continue to grow the business by supplying innovative equipment solutions, services and product support that add value to customers.
- 02** To be the preferred supplier in Indonesia for all crane and material handling requirements.
- 03** Develop people with training, guidance and good management so their full potential can be achieved.

Terus melakukan pengembangan bisnis melalui inovasi dan solusi dukungan produk yang memberikan nilai nilai yang kuat kepada pelanggan.

Menjadi penyedia yang di utamakan di Indonesia untuk semua crane dan material handling.

Mengembangkan sumber daya manusia yang ada dengan pelatihan dan kemampuan manajemen yang baik juga penuh potensi untuk meraih pencapaian yang lebih jauh lagi.

MISSION

- 01** Use technology and innovation to drive growth and business development.
- 02** Empower our employees so they become responsible and professional representatives of Cranserco.
- 03** Utilise health & safety systems in all aspects of Cranserco operations.

Menggunakan teknologi dan inovasi untuk mendorong pertumbuhan dan pengembangan bisnis.

Memberdayakan Karyawan kami sehingga mereka menjadi perwakilan Cranserco yang bertanggung jawab dan profesional.

Memanfaatkan sistem Kesehatan dan Keselamatan di semua aspek operasi Cranserco.

PROMISE

- 01** Provide a safe and secure working environment for all employees where they can achieve their full potential without fear of injury, harassment or prejudice.
- 02** Treat all customers and suppliers with respect and honesty.
- 03** Foster good working relationships through integrity and open communication.

Menyediakan lingkungan kerja yang aman dan tenteram bagi semua karyawan di mana mereka dapat mencapai potensi penuh mereka tanpa takut akan cedera, pelecehan atau prasangka.

Perlakukan semua pelanggan dan pemasok dengan rasa hormat dan kejujuran.

Membina hubungan kerja yang baik melalui integritas dan komunikasi terbuka.





Equipment Product Range



GROVE

Grove All Terrain Cranes

Capacity
50 - 450 tons

Total gross vehicle weight
36000 - 84000 kg

Main boom length
40 - 80 m

Max tip height
51 - 136 m

Grove All Terrain Cranes are manufactured to the highest quality in the Wilhelmshaven factory, Germany. This facility, specializing in lean manufacturing techniques and complying with ISO9001 quality standards, is constantly developing processes to optimize reliability and durability through continuous improvement. Delivering powerful lifting performance, superior off-road mobility and fast highway speeds.

Grove All Terrain Cranes diproduksi dengan kualitas terbaik di pabrik Wilhelmshaven, Jerman. Pabrik ini dikhususkan dalam produksi ramping (Lean Manufacturing) yang mengikuti standar kualitas ISO9001 dan konsisten dalam pengembangan teknologi. Memberikan performa yang kuat, mobilitas off-road yang unggul, dan kemampuan berjalan dengan kecepatan tinggi pada jalan raya.

GROVE

Grove Rough Terrain cranes are designed to handle the toughest jobsite conditions with lift capacities ranging from 30 t to 150 t.

Performance, productivity and operator comfort features allow your operators to work effectively for longer days with less fatigue. Quality, reliability and easy maintenance are built into every Grove rough terrain crane, making them the right choice for your business.

Crane Grove Rough Terrain dirancang untuk menangani pekerjaan berat dengan kapasitas angkat berkisar antara 30 ton hingga 150 ton.

Performa kerja, produktivitas, dan kenyamanan operator memungkinkan anda bekerja secara efektif untuk waktu yang lebih lama tapi tidak menyulitkan. Kualitas, kekuatan, dan perawatan yang mudah dibangun di setiap unitnya, menjadikannya pilihan tepat untuk bisnis anda.



Grove Rough Terrain Cranes

Capacity
30 - 150 tons

Total gross vehicle weight
27555 - 86550 kg

Main boom length
8,8 - 62,5 m

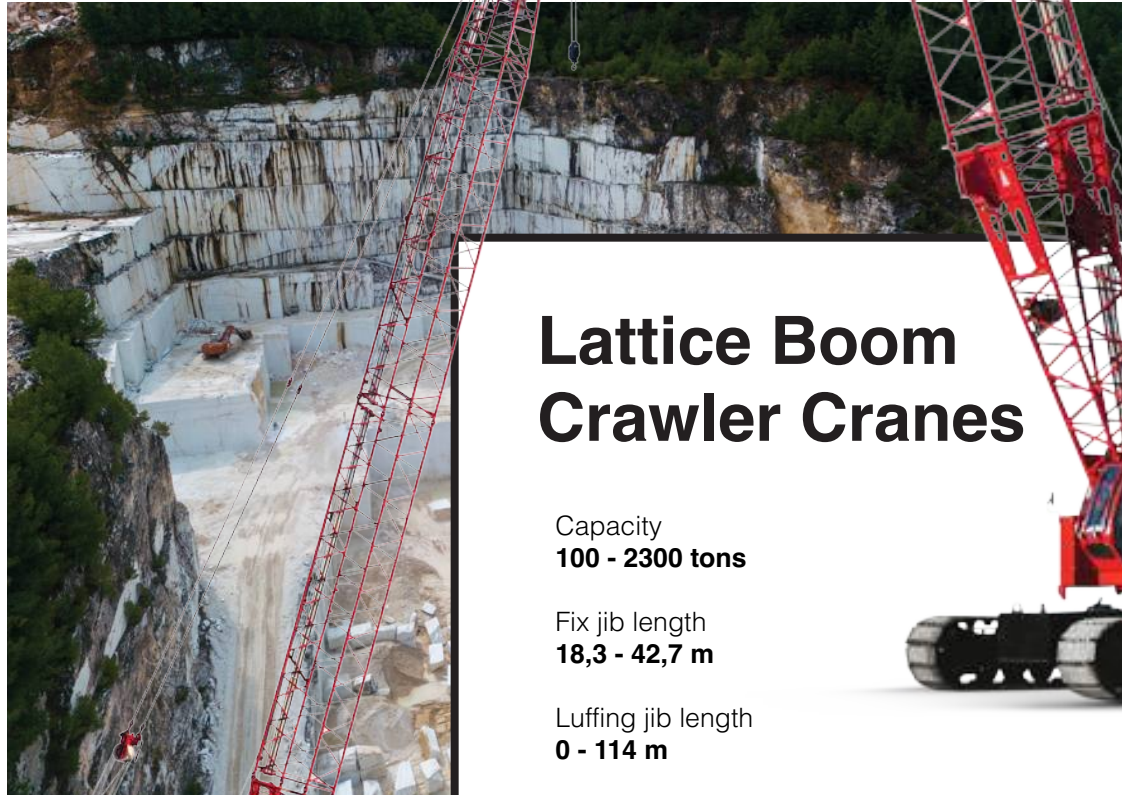
Max tip height
44,5 - 91,1 m



Manitowoc Cranes has been manufacturing a comprehensive range of products to support your lattice-boom crane lifting needs since 1925.

The crawler portfolio showcases innovation and velocity in all models to build opportunity on every jobsite

Manitowoc Cranes telah memproduksi serangkaian produk lengkap untuk mendukung kebutuhan lifting anda sejak tahun 1925. Portofolio crawler menunjukkan inovasi dan kecepatan di semua model untuk membuka peluang di setiap pekerjaan.



Lattice Boom Crawler Cranes

Capacity
100 - 2300 tons

Fix jib length
18,3 - 42,7 m

Luffing jib length
0 - 114 m

Main boom length lattice
61 - 146 m





Franna pick and carry cranes live up to their name with the strength and easy operation to pick up heavy loads and the steering flexibility to move in tight spaces. Their high road speeds get them to the jobsite quickly, and because the articulated frame needs no outriggers, you can get set up and working almost immediately.

Franna pick and carry crane sesuai dengan namanya memiliki kekuatan dan pengoperasian yang mudah untuk mengangkat beban berat serta fleksibilitas kemudi untuk bergerak di ruang sempit. Kecepatan jalan yang tinggi membawa mereka ke lokasi kerja dengan cepat, dan karena rangka tidak memerlukan outrigger, crane anda dapat segera siap dan bekerja.

Franna Pick & Carry Cranes

Capacity
15 - 40 tons

Main boom length
17,9 - 19,8 m





Unique design features make our equipment real all-rounders in material handling. Whether at the scrap yard, in recycling, woodyards or for use in ports – Fuchs® machines stand for maximum productivity and economy everywhere.

Fuchs – this name not only stands for innovative and highly efficient loading machines of excellent quality, but also for a decades-long history, which is characterized by pioneering achievements in technology.

Fitur desain yang unik menjadikan peralatan kami serba bisa dalam penanganan material. Baik di tempat pembuangan sampah, di daur ulang, di tempat pemotongan kayu, atau untuk digunakan di pelabuhan – mesin Fuchs® mewakili produktivitas maksimum dan penghematan di mana pun.

Fuchs – nama ini tidak hanya berarti mesin pemuatan yang inovatif dan sangat efisien dengan kualitas yang sangat baik, tetapi juga sejarah selama puluhan tahun, yang ditandai dengan pencapaian perintis dalam teknologi.

Fuchs Material Handlers

Reach
8 - 25 m

Electric motor
75 - 250 kW

Service weight
without attachments
14 - 87 t

Engine power
EU stage V/
U.S. Tier 4

85 - 300 kW

Engine power
EU stage IIIA/
U.S. Tier 3

95 - 273 kW



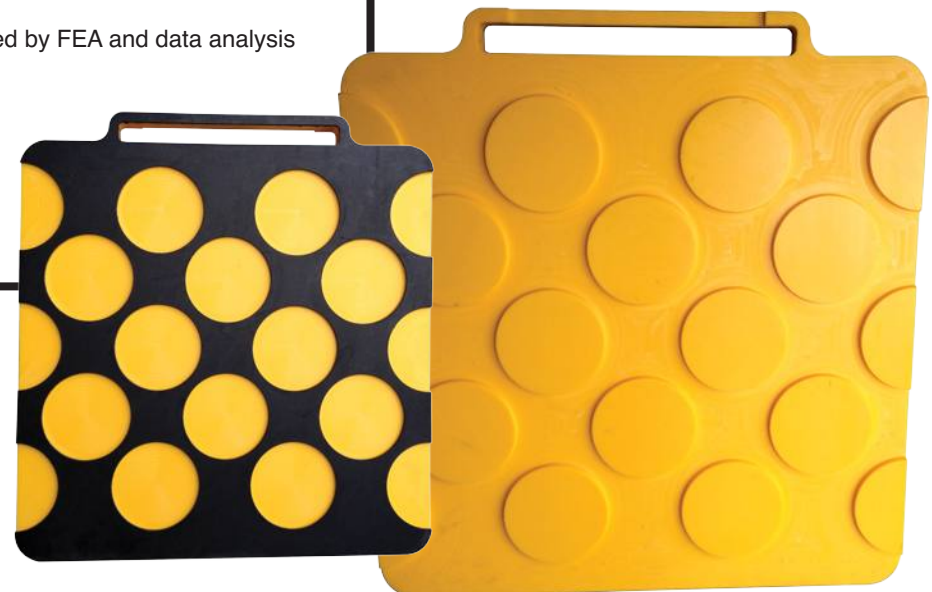
Stab Pad

Stab Pad Outrigger Stabilizer Pads

- Non slip, non marking TPE layer
- Solid ultra durable base material
- Custom handle and size options
- Supported by FEA and data analysis

Stab pads provide lightweight stability and safety in all lifting scenarios. Engineered to improve your footprint on the contact surface.

Stab Pads memberikan stabilitas ringan dan keamanan yang lebih baik di semua jenis pengangkatan. Diciptakan untuk meningkatkan kekuatan jejak anda pada permukaan.



MERLIN[®]

LED LIGHTING SOLUTIONS

Merlin LED Lighting Solutions

Merlin Mobile LED Lights are designed to the highest quality standards providing the latest in LED technology in an efficient, reliable, durable and environmentally friendly package

Lampu Merlin Mobile LED dirancang dengan standar kualitas tertinggi yang menyediakan teknologi LED terkini dalam rangkaian yang efisien, andal, tahan lama, dan ramah lingkungan





Technology Products

ROBWAY Crane Safety Systems

Robway is a leading developer and manufacturer of safe load indicators and line-tension monitoring equipment for all types of cranes and heavy lifting equipment. Robway has been servicing the construction, mining and offshore industries for over 30 years.

Robway adalah pengembang dan produsen terkemuka indikator beban aman dan peralatan pemantauan tegangan garis untuk semua jenis derek dan alat angkat berat. Robway telah melayani industri konstruksi, pertambangan dan lepas pantai selama lebih dari 30 tahun.

Rated Capacity Indicators



- RCI - 4100 •
- RCI - 8510 •
- RCI - 1550 •
- Indicator Range •
- Controller



PROTECTIVE
ENGINEERED SAFETY
GoUpSAFELY
Power Line Proximity Detection

WARNING: Safety Device
Read manual before use. Ensure compliance with local legislative requirements and minimum encroachment distance. The operator is solely responsible for power line safety.

SYSTEM RUNNING

ALARM CAUTION
50Hz Power Detected

STOP WARNING
Immediate Proximity


Go Up Safely •
MEWP Shield •


**Safety Hazard
Detection**





Protective is an innovative, Australian technology company that designs, engineers, manufactures and supplies industries worldwide with globally patented Protective equipment for electrical hazard identification and accident prevention.


Protective adalah perusahaan teknologi Australia yang inovatif yang merancang, merekayasa, memproduksi dan memasok industri di seluruh dunia dengan peralatan Pelindung yang dipatenkan secara global untuk identifikasi bahaya listrik dan pencegahan kecelakaan.


 Detect overhead powerlines

 Reduce risk of electric shock

 Alarm and motion stop options

 Retrofit to most machine types

 Optional stop-motion towards HV power source

 Monitor control motions

LOADRITE®

MEASURE TO ACTION™

Loadrite systems can be installed on almost all types of conveyor belts, mobile crushers, excavators, trucks and wheel loaders. Loadrite's expertise in weighing, along with time and experience in the industry gives an excellent understanding of what is really important to aggregates and mining customers. Installed and serviced by Cranserco factory trained technicians in Indonesia.

Sistem Loadrite dapat dipasang di hampir semua jenis Conveyor Belts, Mobile Crushers, Ekskavator, dan Wheel Loader. Keahlian Loadrite dalam penimbangan serta pengalaman kami di industri ini memberikan pemahaman yang sangat baik tentang apa yang benar-benar penting bagi pelanggan agregat dan pertambangan. Disusun dan dirawat oleh teknisi Cranserco yang sangat terlatih di Indonesia.

Loadrite Payload Scales



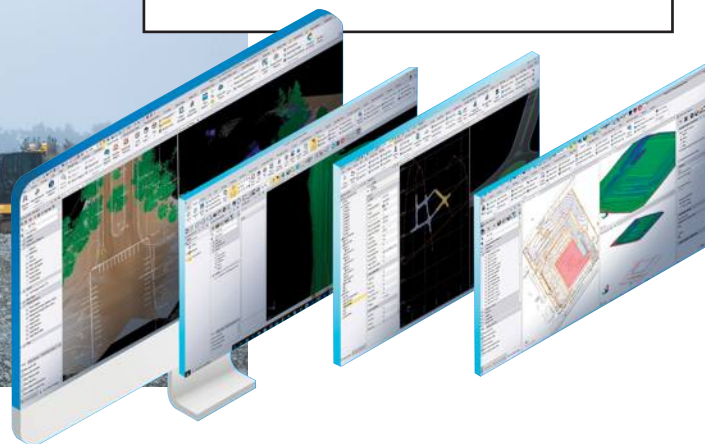
- Loader Scales •
- Excavator Scales •
- Conveyor Belt Scales •
- Tractor, Forklift, Reach Stacker Scales •
- Reporting •
- Online Connectivity Reporting •



Make better decisions, decrease costly mistakes, and increase efficiency in the office and on the job site. Powerful tools help you quickly and easily create accurate, integrated 3D constructible models for construction surveying and machine control. Flexible, all inclusive and connected construction solutions bundled into a predictable contract.

Trimble Heavy Industry
Civil Engineering Construction

- Machine Control •
- Site Positioning Surveying •
- Construction Software •



Membuat keputusan yang lebih baik, mengurangi kesalahan, dan meningkatkan efisiensi di kantor dan di lokasi kerja. Teknologi canggih ini membantu anda secara cepat dan mudah, membuat model konstruksi 3D terintegrasi yang akurat untuk survei konstruksi dan kontrol alat berat. Solusi konstruksi yang fleksibel, inklusif, dan terintegrasi, digabungkan ke dalam satu project yang lebih mudah di gunakan.



Product Support

Parts



Parts delivery is at the core of Cranserco's philosophy to support our customers. It is critical for reliable & safe equipment operation.

Pengiriman suku cadang adalah merupakan inti filosofi Cranserco untuk mendukung pelanggan kami karena hal ini penting untuk mendukung armada operasi para pelanggan yang profesional.

Service



Cranserco offers high quality service and technical support to customers for all equipment types and brands.

Dengan dukungan layanan yang handal, Cranserco menawarkan dukungan layanan berkualitas tinggi kepada pelanggan untuk semua jenis dan merek crane.

Training



Customer training courses are delivered by the Cranserco training department. Course content can be customised for each customers specific requirements.

Kursus pelatihan pelanggan disampaikan oleh Departemen pelatihan Cranserco. Konten kursus dapat disesuaikan untuk kebutuhan spesifik setiap pelanggan.

Technical Support



We work hard to meet our customers expectations. Our technical support team is standing by to provide urgent technical advise when your crane is down. We are here to support you.

Kami bekerja keras untuk memenuhi harapan pelanggan. Tim teknis kami siap memberikan rekomendasi mendesak ketika crane anda bermasalah. Kami di sini untuk mendukung Anda.

Crane Inspections



Cranserco crane inspections will help insure faulty components are identified and allow parts and service to be scheduled. This will prevent unnecessary downtime on critical jobs improving safety, customer satisfaction and reducing unscheduled costs.

Inspeksi crane Cranserco akan membantu memastikan komponen yang rusak teridentifikasi dan memungkinkan penjadwalan suku cadang dan servis.

Hal ini akan mencegah masalah pada pekerjaan penting, sehingga meningkatkan keselamatan, kepuasan pelanggan dan mengurangi biaya yang tidak terduga.

Flat Rate Packages



Cranserco provide flat rate costing for most job tasks. This service enables the customer to budget repair and maintenance accurately by understanding the exact scope of work and how long it will take with all costs involved.

Cranserco memberikan flat rate untuk sebagian besar pekerjaan. Layanan ini memungkinkan pelanggan menghitung anggaran perbaikan dan pemeliharaan secara akurat dengan memahami cakupan pekerjaan yang tepat dan berapa lama waktu yang dibutuhkan dengan semua biaya yang terlibat.

Reach Stacker Product Support



From the highlands of Papua to the jungles of Nusa Tenggara, Cranserco provides class leading service, parts and sales support for our customers reach stacker fleets. On site dedicated Cranserco technicians make sure the reach stackers achieve exceptional reliability and continue to operate safely through a focused product support program.

Dari dataran tinggi Papua hingga hutan Nusa Tenggara, Cranserco menyediakan layanan kelas atas, dukungan suku cadang dan penjualan bagi pelanggan kami yang menjangkau armada penumpuk. Teknisi Cranserco yang berdedikasi di lokasi memastikan Reach Stacker mencapai kemampuan yang luar biasa dan terus beroperasi dengan aman melalui program dukungan produk yang terfokus.



Why us?

01

More than 10 years experience

Berpengalaman lebih dari 10 tahun

02

Well established in the Indonesian marketplace

Memiliki posisi yang kuat pada pasar Indonesia

03

Operate with high standards of safety

Beroperasi dengan standar keselamatan yang tinggi

04

Cost effective solutions provider for multiple products and industries

Menyediakan solusi hemat biaya untuk produk dan industri

05

World class products and dealer support in Indonesia

Produk kelas dunia dan dukungan dealer di Indonesia

06

Certified Technicians

Tim teknisi yang bersertifikat

07

Global OEM Support

Dukungan penuh dari OEM global

08

Offices throughout Indonesia

Memiliki kantor di seluruh bagian Indonesia

09

Established supply chains for global sourcing

Menciptakan rantai pasokan untuk kebutuhan global

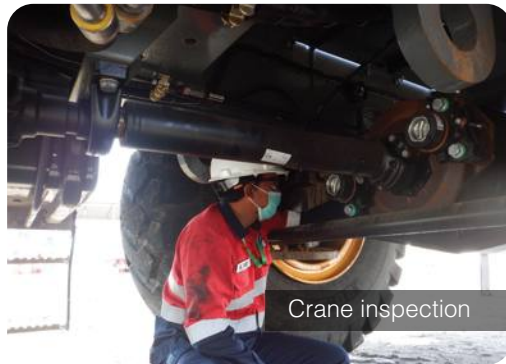
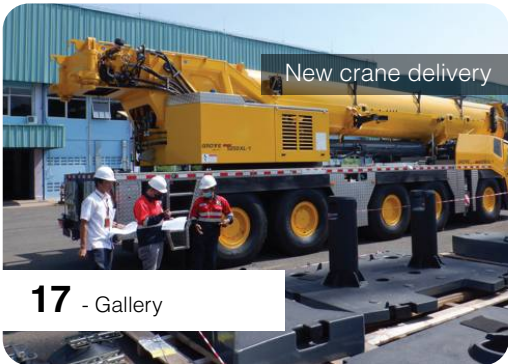
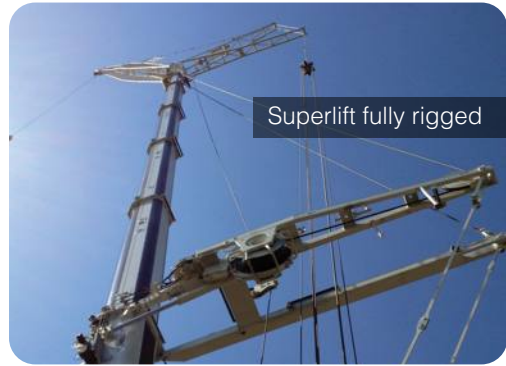
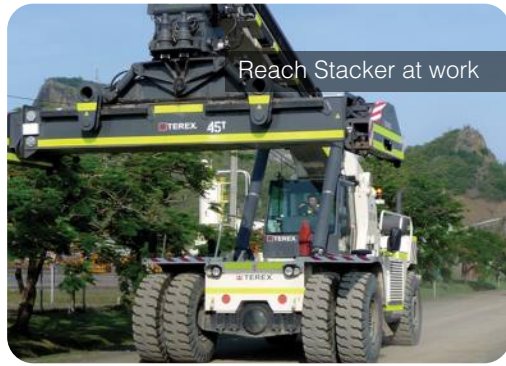
10

One stop shop for all crane and technology product sales, service and support

Menyediakan semua layanan crane, produk kelengkapan crane dan teknologi terkini

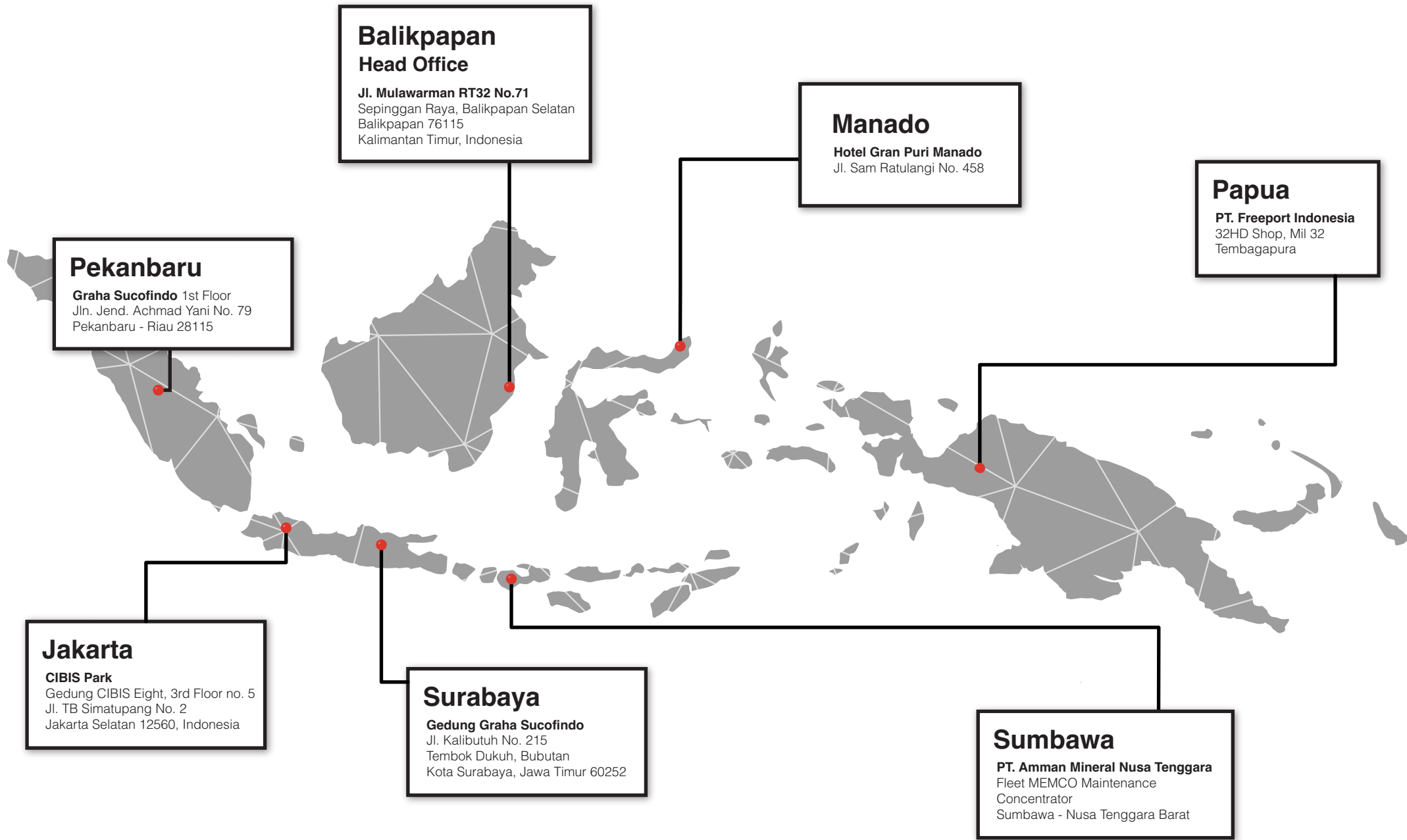


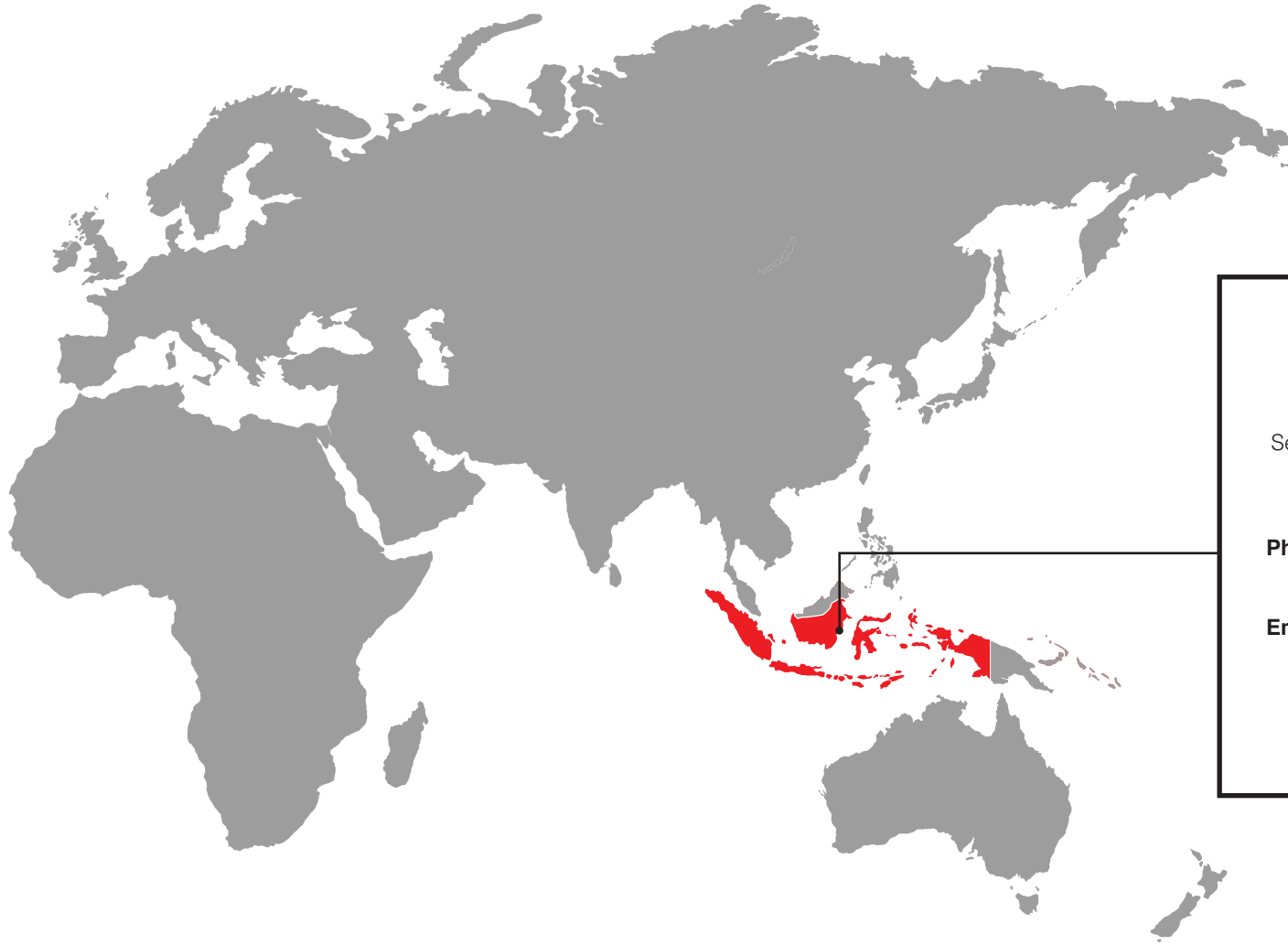
Gallery





Our Locations





Head Office
Balikpapan - Indonesia

Jl. Mulawarman RT32 No.71
Sepinggang Raya, Balikpapan Selatan
Balikpapan 76115
Kalimantan Timur, Indonesia

Phone +62 542-762297
+62 542-762281

Email sales@cranserco.com
service@cranserco.com
parts@cranserco.com
support.tp@cranserco.com

www.cranserco.com